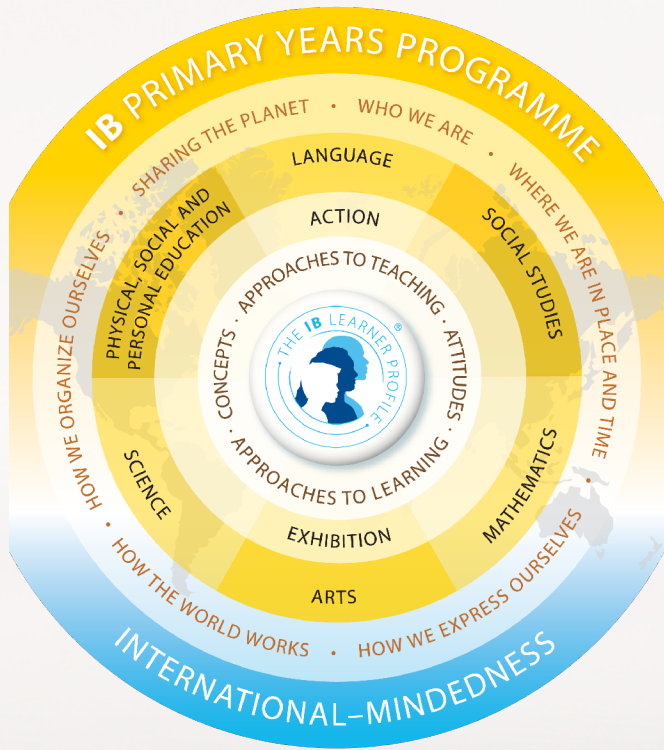


What is IB?



Created in 1968, the International Baccalaureate Programme has grown and changed based on over 40 years of research and practical experience. This dynamic program provides learners with a challenging and comprehensive education, preparing them to be internationally minded and globally engaged.

IB learners strive to become inquirers, knowledgeable, thinkers, communicators, principled, open-minded, caring, risk-takers, balanced, and reflective. These attributes not only prepare students for academic achievement and success, they prepare students to develop an understanding and awareness of diverse cultures and perspectives, allowing them to become collaborative problem solvers.

IB learners gain an education that crosses disciplinary, cultural, national, and geographic boundaries.

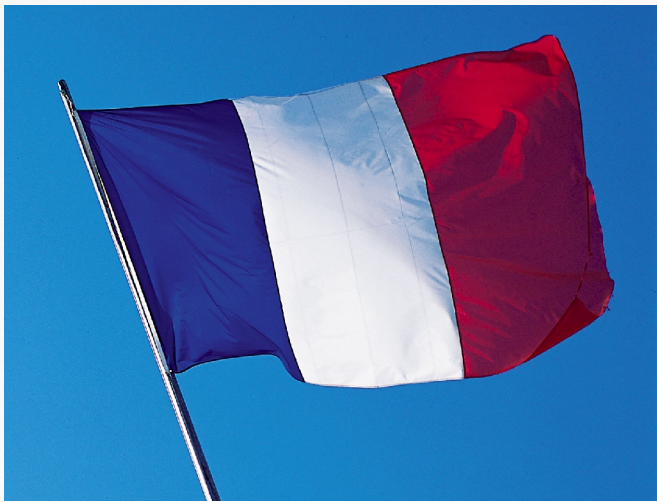


2240 Rosewood Drive
Rock Hill, SC 29732
(803)-981-1540
rw.rock-hill.k12.sc.us



Why Rosewood?





French Immersion

The French Immersion program at Rosewood Elementary International Baccalaureate School provides literacy and content instruction to all participating students through two languages--French and English--promoting bilingualism and biliteracy, grade-level academic achievement, and multicultural competence for all students.



What will we learn?

Students learn math, science, and literacy skills in French and learn Social Studies and English literacy skills in English. Students who begin the French Immersion program in Kindergarten will continue in immersion instruction in each succeeding year through 5th grade, at a minimum.

Connect to the World!



Why French?

200 million people in the world understand, read, speak, or write French. French is an official language of 33 countries. French is the most widely taught second language, after English. French is the 9th most widely spoken language in the world. French is the only language other than English taught in every country in the world. French is a major language of high tech and business in the world.

Information

Rosewood Elementary International Baccalaureate School is a School of Choice. Enrollment is open to students each year in January and February.

Parent Responsibilities

- Commit to long-term participation in the French Immersion program.
- Develop an understanding of French Immersion education.
- Read with your child in English 30-30 minutes each day.



What Makes Rosewood Special?

The IB Primary Years Programme at Rosewood emphasizes learning how to learn, helping students interact effectively with the learning environments they encounter, and encouraging them to value learning as an essential and integral part of their everyday lives.



IB Learner Profile

The aim of all IB programmes is to develop internationally minded people who, recognizing their common humanity and shared guardianship of the planet, help to create a better and more peaceful world. We believe the 10 attributes valued by IB World Schools can help individuals become responsible local, national, and global citizens.