

# ST. HELENA ELEMENTARY SCHOOL:

REPORT TO PARENTS 2020-2021



A PROUD TITLE 1 SCHOOL!

# A LEADER IN ME SCHOOL!

## THEME: GAME ON/LEAD LIKE A CHAMPION!

### PURPOSE OF THE REPORT TO PARENTS

This report is provided annually to highlight the progress of St. Helena Elementary School. It presents information regarding our challenges and successes during the 2020-2021 school year.



#### SCHOOL MISSION STATEMENT

The mission of St. Helena Elementary School is to empower students to lead, achieve, and succeed!

#### SCHOOL VISION STATEMENT

Developing lifelong learners that lead in the community, succeed in the school and achieve their dreams.

#### LEADERSHIP PARADIGMS

Leadership: Everyone can be a leader.

Potential: Everyone has genius.

Change: Change starts with me.

Motivation: Educators empower students to lead their own learning.

Education: Develop the whole person.



### ST. HELENA ELEMENTARY SCHOOL WIGS (WILDLY IMPORTANT GOALS)

- Recruit and retain highly qualified staff
- Increase student achievement to meet/exceed district/state averages on SC Ready in both Reading and Math
- Increase parent engagement and participation in our SIC/PTO
- Ensure that best practices and resources in learning, teaching, and leadership are consistent and equitable across the school



- Increase the number of students scoring at the 50% or above on NWEA MAP Math and Reading assessments
- Achieve Leader in Me Lighthouse Status within the next 2 years

## SCHOOL RENEWAL PLAN (5 YEAR GOALS AND INTERIM GOALS)

### Performance/Interim Goals

#### **Performance Goal:**

By the end of the 2023-2024 school year, SC Ready ELA scores will increase for students in grade 3 from 20.4% to 35.4%, in Grade 4 from 20.9% to 35.9%, and Grade 5 from 24.1% to 39.1% meets or exceeds expectations.

#### **Interim Goal:**

By 2021-2022, increase SC Ready ELA scores in Grade 3 from 14.50% to 19.72%, in Grade 4 from 34.0% to 39.0%, and in Grade 5 from 24.3% to 28.0% in meets or exceeds expectations.

### Performance/Interim Goals

#### **Performance Goal:**

By the end of the 2023-2024 school year, SC Ready Math scores will increase for students in Grade 3 from 42.6% to 67.6%, Grade 4 from 25.4 to 50.4%, and Grade 5 from 54.4% to 69.4% scoring meets or exceeds expectations.

#### **Interim Goal:**

By the end of the 2021-2022 school year, increase SC Ready Math scores in Grade 3 from 27.30% to 32.30%, in Grade 4 from 37.70% to 41.7%, and in Grade 5 from 28.60% to 33.60% in meets or exceeds expectations.

## Performance/Interim Goals

### **Performance Goal:**

By the end of the 2023-2024 school year, St. Helena Elementary School will increase the number of Kindergarten through 2nd grade students scoring at the 50% or above on NWEA MAP Reading assessment from: Kindergarten 49.2% to 59.2%; First Grade 41.5% to 51.5%; and Second Grade 25.5% to 35.5%.

### **Interim Goal:**

By the end of the 2021-2022 school year, St. Helena Elementary School will increase the number of Kindergarten through 2nd grade students scoring at the 50% or above on NWEA MAP Reading assessment from: Kindergarten from 40.4% to 50.8%; First Grade from 25.5% to 49.0% ; Second Grade from 24.2% to 40.3%.

## Performance/Interim Goal

### **Performance Goal:**

By the end of the 2023-24 school year, St. Helena Elementary will increase the number of students scoring at the 50% or above on NWEA MAP Math assessment from: Kindergarten: 35% to 45%; First Grade: 54.7% to 64.7%; Second Grade: 31.4% to 41.4%

### **Interim Goal:**

By the end of the 2021-2022 school year, St. Helena Elementary will increase the number of students scoring at the 50% or above on NWEA MAP Math assessment from: Kindergarten: 40.4% to 50.8%; First Grade: 23.5% to 49.0%; Second Grade: 25.8% to 40.3%.



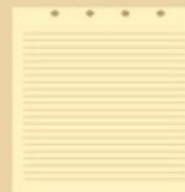
## Performance/Interim Goal

### **Performance Goal:**

By the end of the 2023-2024 school year, St. Helena Elementary staff will increase from basic to sustaining on the Lighthouse Leader in Me Rubric in the area of Leadership Principles (Professional Learning, Student Learning, and Family Learning).

### **Interim Goal:**

By the end of the 2021-2022 school year, St. Helena Elementary staff will increase from developing to mature on the Lighthouse Leader in Me Rubric in the area of Leadership Culture (Create a Leadership Environment and Shared Leadership).



## Performance/Interim Goal

### **Performance Goal:**

By the end of the 2023-2024 school year, St. Helena Elementary staff will increase from basic to sustaining on the Lighthouse Leader in Me Rubric in the area of Leadership Culture (Leadership Environment, Shared Leadership, and Leadership Events).

### **Interim Goal:**

By the end of the 2021-22 school year, St. Helena Elementary will increase the percentage of students scoring "committed" on the Student engagement survey from 73.8% (Spring 2019) to 80% as measured by the AdvancEd School Quality Survey.



## Performance/Interim Goal

### Performance Goal:

By the end of the 2023-2024 school year, St. Helena Elementary will increase the percentage of students scoring "committed" on the Student engagement survey from 60.9% (Spring 2018) to 70.9% as measured by the AdvancEd School Quality Survey.

### Interim Goal:

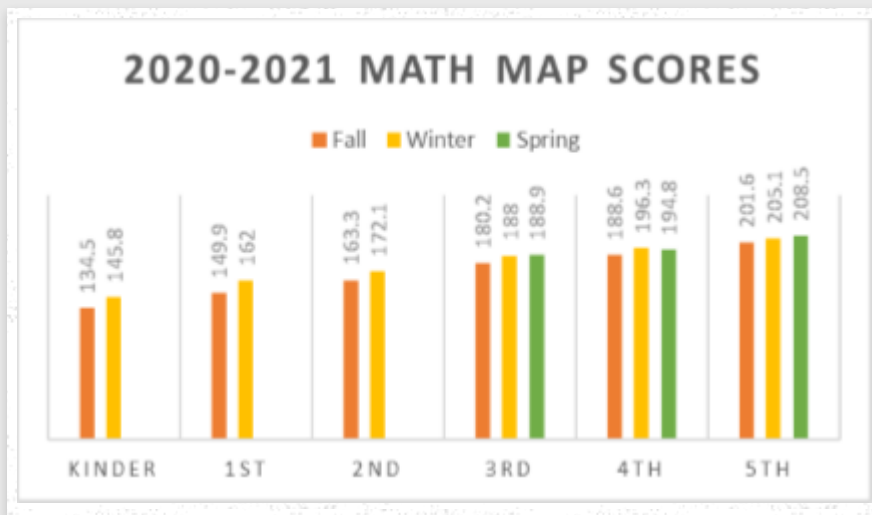
By the end of the 2021-2022 school year parent participation in family engagement events will increase from 45% to 48.75%.

## ACADEMIC PROGRESS 2020-2021

MAP Assessments provide mean RIT scores for each grade level which are calculated from the individual RIT scores for all children in that grade. RIT scores are used as a measure of student growth on a learning continuum in reading and math. The data below is from our Spring MAP test given to 3rd-5th grade students. The results for K-2 are from fall to winter. Our K-2 students will take their spring assessment in May. This year has been a challenging year and we have not seen as much growth as we would like but our teachers are constantly working to meet the individual needs of all students.



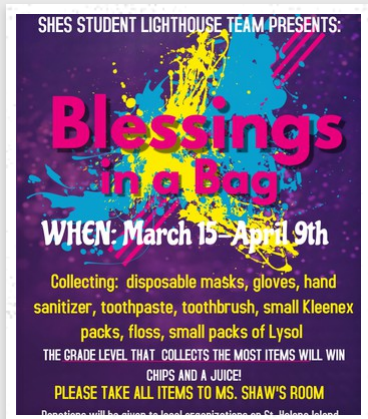




## ACCOMPLISHMENTS AND CELEBRATIONS



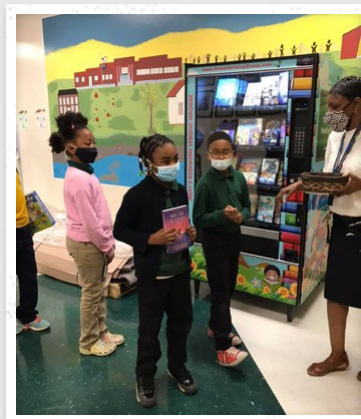
- Implemented Student Lighthouse Team Service Project (Blessings in a Bag)
- Hosted Wellness Wednesdays –Virtual Sessions for Parents
- Implemented a Virtual After School Tutoring Program
- Partnership with Cross Community Church (Food Pantry)
- Partnerships with The Parish Church of St. Helena
- Hosted Virtual Leadership Celebrations
- Created a School Based Wellness Team
- Implemented a School Reading Initiative--Book Vending Machine
- Inducted first Chapter of the National Elementary Honor Society



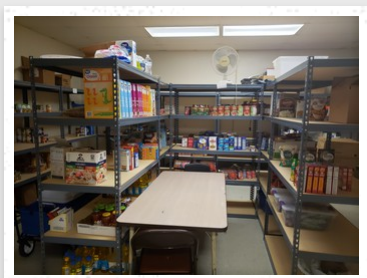
## STUDENT LIGHTHOUSE TEAM SERVICE LEARNING PROJECT



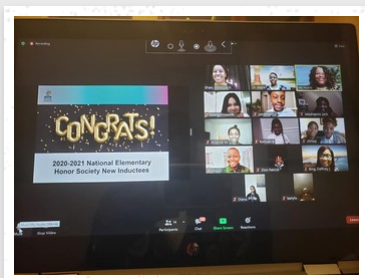
## WELLNESS WEDNESDAY ACTIVITY



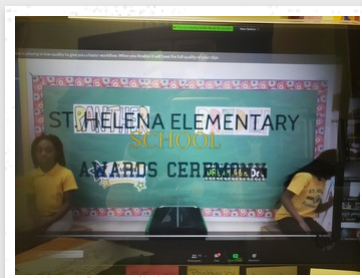
## BOOK VENDING MACHINE



## FOOD PANTRY



## NATIONAL ELEMENTARY HONOR SOCIETY



## VIRTUAL LEADERSHIP CELEBRATION



## STAY CONNECTED WITH SHES

Facebook @SHESPanthers

Please join our Facebook page and follow us on Twitter!

1025 Sea Island Parkway, Sain...

tara.mack@beaufort.k12.sc.us

843-838-0300

shes.beaufortschools.net/



