

## Bluffton HS 2013-2014 Achievements

### “View From the Top”

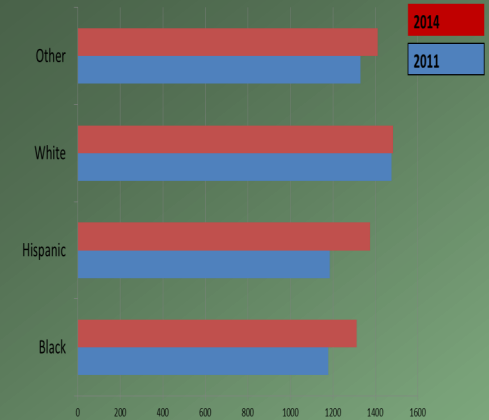
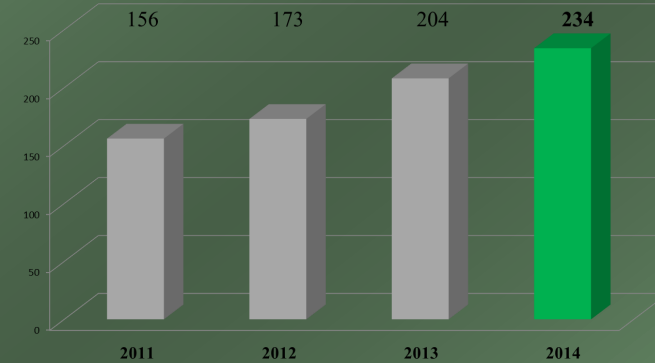
- ◇ SC School Report Card Rating: EXCELLENT
- ◇ Growth Rating: EXCELLENT
- ◇ Palmetto Gold Award : 2012, 2013 & 2014
- ◇ Senior Scholarships and Awards: \$5,200,000
- ◇ *US News & World Report* Top-15 South Carolina High Schools: 2015 #9 Ranking
- ◇ *US News & World Report* “America’s Best High Schools” National Ranking: 2015
- ◇ “America’s Most Challenging High Schools “- 2011, 2012, 2013, 2014, & 2015. The Washington Post High School Challenge Index Program
- ◇ School Climate Survey showed a 10% improvement in student perception in the areas of:
  - school safety
  - respect
  - school quality
  - student-staff relationships
  - reduction of bullying

## BLHS “Top Scholars”

	2012	2013	2014	+/-
# of AP Exams	392	521	603	+211
# Scoring 3 & Above	267	287	341	+64
Passing Student %	68%	70%	72%	+4%

AP 3+ Pass	# Tests	# Passed	% Passed
2010	418	241	58%
2011	294	219	56%
2012	388	267	68%
2013	521	287	70%
2014	603	341	72%

## SAT

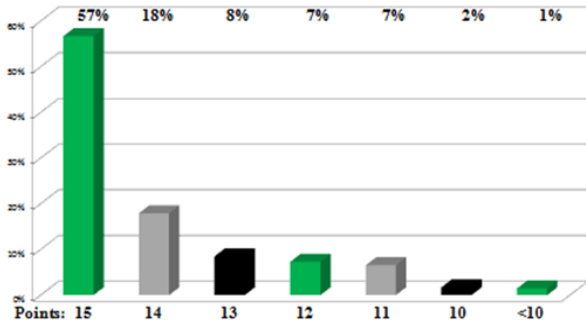


HSAP 2013-14: Passed Both	%	( +/-)	Did Not Pass Both	#	%	( +/-)
2009-10	73%		101	27%		
2010-11	81%	+8%	88	19%		-8.0%
2011-12	87%	+6%	44	13%		-6.0%
2012-13	90%	+3%	26	10%		-3.0%
2013-14	91%	+1%	37	9%		-1.0%
		<b>+18%</b>				<b>-18.0%</b>



# BOBCAT PRIDE

2014 HSAP Writing Score: 420 Students  
Out of 15 points Possible



## 2014-15 Bluffton HS SIC Members

<i>Mark Dievendorf</i>	<i>Principal</i>
<i>Bobby Collar</i>	<i>President</i>
<i>John Ortega</i>	<i>Vice-President</i>
<i>Maggie Williams</i>	<i>Secretary</i>
<i>Loretta Novince</i>	<i>Community Rep.</i>
<i>Leah Ortega</i>	<i>Parent Rep.</i>
<i>Kevin Sandusky</i>	<i>Teacher Rep.</i>
<i>Maria Arizmendi</i>	<i>Student Rep</i>
<i>Alexis Manuel</i>	<i>Student Rep</i>
<i>Katie Hanley</i>	<i>Student Rep</i>
<i>Jurnee Jones</i>	<i>Student Rep</i>

## Bluffton High School

Annual Report to Parents 2014-15

“BOBCAT NATION!”



## Closing Achievement Gaps

2011 to 2014 HSAP & EOC Achievement Gap Analysis Summary:							
HSAP	2011	2014	Reduction	EOC	2011	2014	Reduction
Female to Male	4.50%	2.70%	-1.80%	Male to Female	5.00%	3%	-2.00%
White to Black	16.80%	2.70%	-14.10%	White to Black	28.40%	16.70%	-11.70%
All to Black	16.80%	1.90%	-14.90%	All to Black	14.50%	10%	-4.50%
White to Hispanic	20.10%	1.70%	-18.40%	White to Hispanic	30.20%	11.30%	-18.90%
All to Hispanic	20.10%	0.90%	-19.20%	All to Hispanic	11.30%	4.60%	-6.70%
All to SpEd	29%	27.60%	-1.40%	All to SpEd	31.3%	23.4%	-7.90%
All to ESOL	18.60%	-1.50%	-20.10%	All to ESOL	14.30%	9.90%	-4.40%
All to F & R	6.80%	3.00%	-3.80%	All to F & R	10.90%	6%	-5.40%
Ave. Gap Reduction			-11.71%	Ave. Gap Reduction			-7.68%

12 HE McCracken Circle

Bluffton, SC 29910

(843) 706 - 8800

<http://blh.beaufort.k12.sc.us/>

### Mission Statement

Bluffton High School is committed to assuring that all students acquire the knowledge and skills necessary to live as productive and informed citizens in an ever-changing society.