

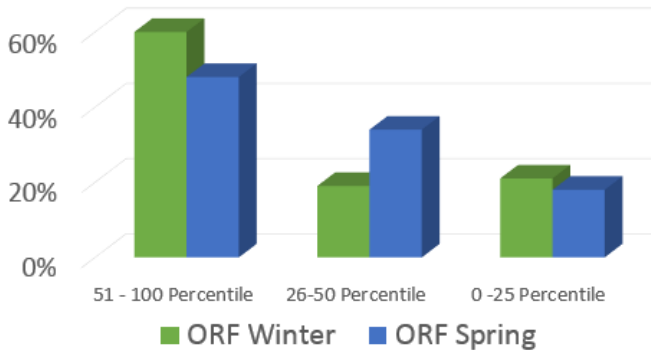
2015-2016 SCHOOL IMPROVEMENT GOALS

The percentage of exiting 2nd grade students scoring above the district average on district unit tests in math, reading, science and social studies will increase by five percent yearly as reported in Mastery Connect.

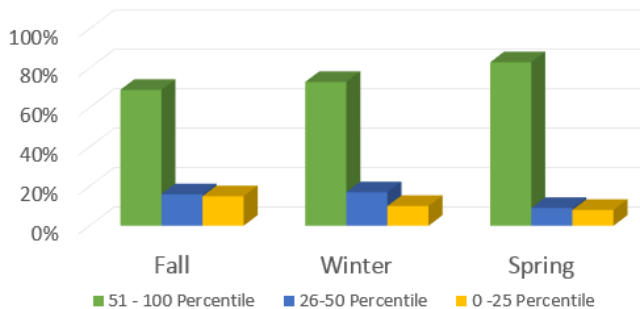
The percentage of students in 5K scoring at or above benchmark will increase by five percent from 81% August 2015 to 86% May 2016.

The percentage of first grade students meeting benchmark on the spring oral reading fluency passage will increase from 80% in Spring 2015 to 84% in Spring 2016.

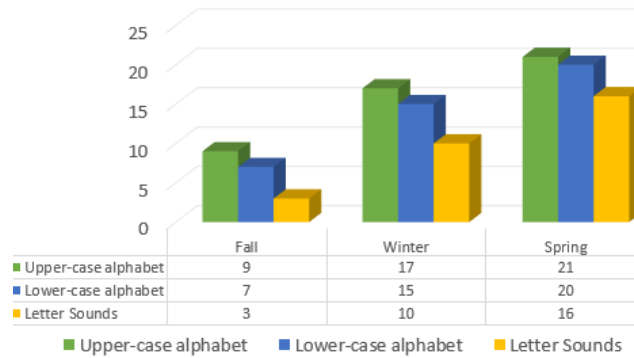
Path Driver ORF First Grade



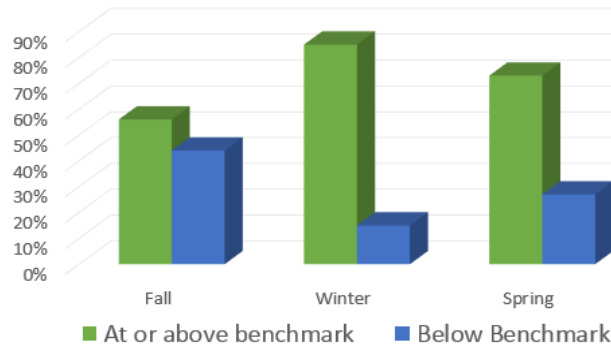
Path Driver First Grade Math



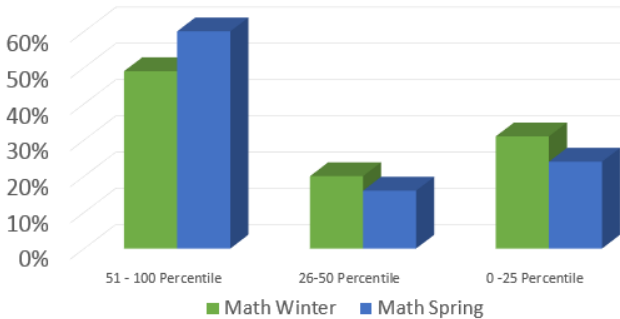
PALS 4K Average Scores



5K DRA2+



Path Driver Math Kindergarten



2015-16 BES, continued with MTSS Tier II intervention program. The MTSS program focuses on differentiating instruction daily in ELA to address the needs of the individual child. This program allows teachers to enrich, remediate, or reteach skills and concepts at the students' levels in small group settings. Teachers meet regularly in grade level to discuss students' growth and make changes within the groups as needed. This allows children to benefit from a variety of teaching styles and strategies.

Berkeley Elementary School

2016—2017 REPORT TO THE PARENTS

Accredited by AdvancED Accreditation Commission (SACS)

2009 - 2013

State School of Character

2012—2015

National School of Character



Kelly Gabriel

Principal

Denise Hucks

Assistant Principal

715 Highway 6
Moncks Corner, SC 29461

(843) 899-8860

(843) 899-8865 FAX

<http://www.berkeley.k12.sc.us/Berkeley.cfm>

2013-2014

Absolute Rating: Excellent

Growth Rating: Excellent

Available in color on the website.



Vision

Empower All Students for Success

Mission

In partnership with our community, to ignite in every student a passion for world-class knowledge and skills through dynamic instruction and personalized educational opportunities.



Purpose of Report

The purpose of this school report is to provide parents, teachers, faculty, community members and the general public with information regarding the staff, curriculum, programs, assessments, and goals of the school in an effort to maintain ongoing and positive communication.

FAST FACTS

School Enrollment	717
Certified Staff	56
Certified Staff with Masters or Higher	27
Para-Professional	16
Support Staff	18
Full Time Nurse	1
National Board Certified Teachers	7

ACTIVITIES OF NOTE

- Whales Tales Reading Incentive Program
- Before & After-School Daycare
- BHS Teacher Cadet Program
- Maestro Club after-school chorus
- Kids Who Care Environmental Awareness
- Fine Arts Program
- Read with A Child Volunteer Program: Santee Cooper
- Family Involvement
- * Math Night / Come Read with Me/Action Based Learning
- Vehicle Day
- Field Day
- Wellness Dance
- Water Missions

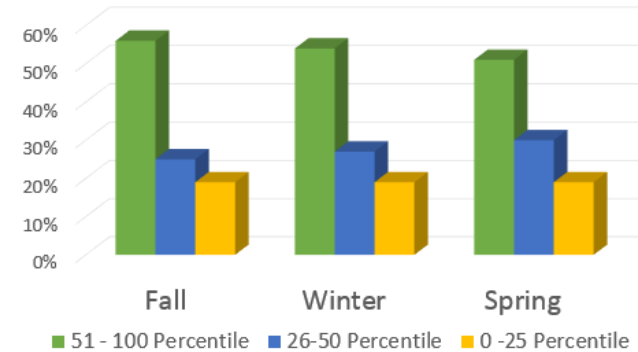
SCHOOL IMPROVEMENT COUNCIL

- | | |
|--------------------------------|---------------------------|
| Kelly Gabriel, Principal | Kellina Logan, Teacher |
| Denise Hucks, Asst. Prin. | Rita Polk, Parent |
| Amanda Kirby, Chair | Betty Brown, Community |
| Jane Harrelson, Dist. Office | Sarah Calhoun, Parent |
| Deanne Riddle, Teacher | Jared Calhoun, Parent |
| Toni Sherman, Teacher | Ashley Scoonover, Teacher |
| Dianne Sessions, Curric. Coach | Karen Karl, Parent |
| Tarah Browning Teacher | Christy Moon, Parent |
| Joy Brennan, Community | Abbey Mills, Parent |
| Kristen Stevenson, Teacher | Carey Carrick, Parent |
| Erica Clanton Teacher | Jenny Hoffman, Nurse |
| Jessica Lewis, Teacher | |
| Kelly Brown, Speech Path. | |



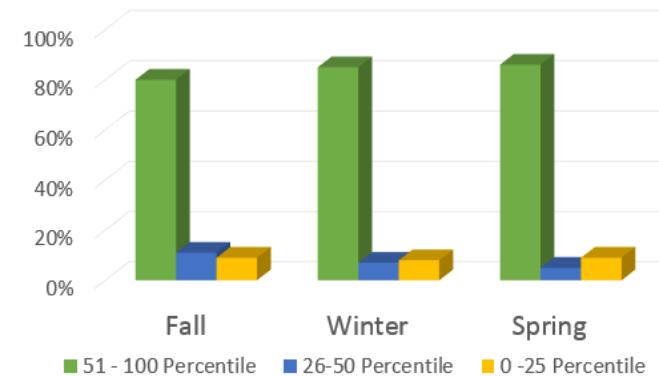
Data Results from 2015-16

Path Driver ORF Second Grade



Spring of 2016, 51% of second grade students scored in the 51st - 100th percentile on ORF in Path Driver. Thirty percent scored in the 26th - 50th percentile and 19% scored below the 25th percentile.

Path Driver Second Grade Math



Spring of 2016, Eighty-six percent of second graders scored between the 51st - 100th percentile in Path Driver Math. Five percent scored between the 26th - 50th percentile and 9% scored below the 25th percentile.