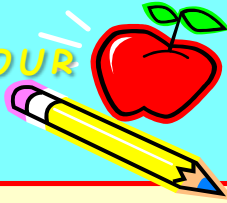


**EXCELLENCE IS OUR
STANDARD**



**A Title I Funded and
Positive Behavior
Interventions and
Supports (PBIS)
School**

Midland Park Primary

Our Vision

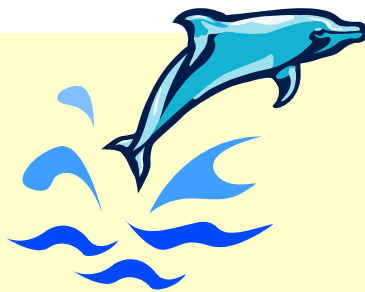
At Midland Park Primary, we will develop a love of learning in a nurturing and respectful community in preparation for life-long achievement.

Current Enrollment – 374

Grades – Early Head Start, Head Start, CD, and Kindergarten

School Mascot – Dolphin

School Colors – Blue and White



Midland Park Primary
2415 Midland Park Road
North Charleston, SC 29406
Phone: 843-574-2183
Fax: 843-569-5476

Elizabeth McCraw, Principal

Gayle Morris - Assistant Principal

Students Enjoy...

- Computer Classes
- Art, Music, PE and Library
- Music and performances at Title I events
- Character Education Student of the Month
- Terrific Kids
- Backpack Buddies

Parents Enjoy...

- Title I events and activities
- Make and Take Workshops
- Volunteering in classrooms
- School Improvement Council (SIC)

Highlights...

- PBIS (Positive Behavior Interventions and Supports) Model – banner School
- Kaleidoscope after-school program
- Multiple computers/iPad in classrooms
- SMART/Promethium Boards in classrooms

Midland Park Primary has a current enrollment of 374 students CD – Kindergarten as well as our Early Head Start Program that serves students birth – 4 year olds. Our primary focus is to actively engage students in order to close the achievement gap and build a solid foundation to prepare students for on-time graduation. We have one kindergarten reading interventionist that works with approximately 50 kindergarten students. We also, have one associate math teacher that works with kindergarten students. In addition, we focus on increasing parental involvement, increasing school to home interactions, and enhancing classroom instructional strategies through ongoing staff development. All of our classrooms are now equipped with new integrated Promethium Boards and we have 1 to 1 Ipad for Kindergarten students.

Teacher teams met weekly to discuss the State Standards, Instructional Practices, and data gained from sources such as Common Assessments, Measures of Academic Progress, Developmental Reading Assessment 2, and refined Instructional Calendars. Our Multi-Tiered Systems of Support Team (MTSS) provided the guidance and framework for our Response to Interventions.

Opportunities for parental involvement were established through the continuation of family nights, Parent Literacy Events, Health and Wellness, and Math Make and Take Workshops. Communications with parents were sent home in both English and Spanish to inform all parents of school activities. This was facilitated by our school translator. Our parents are always made to feel welcome and are often seen volunteering throughout the school. Our positive school climate allows our children to feel safe in a nurturing environment where they can reach their full potential.

We continue to make daily decisions based on data. Our high expectations have resulted in exemplary performances from our teachers and our students.

We are excited about our accomplishments and look forward to continued success at Midland Park Primary where “Excellence is Our Standard.”

Elizabeth McCraw, Principal

Bridget Cantelmo, SIC Chairperson

SIC Members

Bridget Cantelmo – Chairperson

Megan Croghan– Teacher

Rosa Barrios Perez – Parent

Elizabeth McCraw – Principal

Ashley Lopez – Community Member

Ashton Linville – Parent

Philip Pinckney – Community Member

Gayle Morris – Assistant Principal