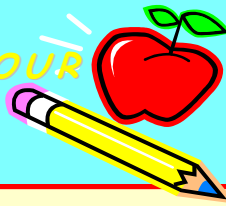


**EXCELLENCE IS OUR
STANDARD**



**A Title I Funded and
Positive Behavior
Interventions and
Supports (PBIS)
School**

Midland Park Primary

Our Mission

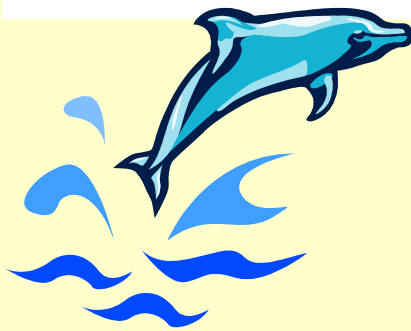
Midland Park Primary will help each child reach his or her maximum potential and prepare every individual for future experiences.

Current Enrollment – 625

Grades – Early Head Start, CD,
Kindergarten and 1st

School Mascot – Dolphin

School Colors – Blue and White



Midland Park Primary
2415 Midland Park Road
North Charleston, SC 29406
Phone: 843-574-2183
Fax: 843-569-5476

Elizabeth McCraw, Principal

Gayle Morris - Assistant Principal

Students Enjoy...

- Action Based Learning Lab
- Computer Classes
- Music and performances at PTO meetings
- Character Education Student of the Month
- Terrific Kids

Parents Enjoy...

- PTO events and activities
- Make and Take Workshops
- Volunteering in classrooms
- School Improvement Council (SIC)

Highlights...

- PBIS (Positive Behavior Interventions and Supports) Model – banner School
- Kaleidoscope after-school program
- Multiple computers in classrooms
- SMART Boards in classrooms
- Weekly Courier Folders

Midland Park Primary has a current enrollment of 625 students CD – 1st grade as well as our Early Head Start Program that serves students birth – 4 year olds. Our primary focus is to actively engage students in order close the achievement gap and build a solid foundation to prepare students for on-time graduation. We have two Master Reading teachers and one associate reading teacher that worked with approximately 54 students in 1st grade and two kindergarten interventionist that works with 49 kindergarten students. In addition, we focused on increasing parental involvement, increasing school to home interactions, and enhancing classroom instructional strategies through ongoing staff development. All of our classrooms are now equipped with integrated SMART boards and document cameras.

Teacher teams met weekly to discuss the Common Core, Instructional Practices, and data gained from sources such as Common Assessments, Measures of Academic Progress, Dynamic Indicators of Basic Early Literacy Skills, established SMART goals, and refined Instructional Calendars. Our Core Team provided the guidance and framework for our Response to Interventions. Opportunities for parental involvement were established through the continuation of family nights, PTO events, Parent Literacy Events, Math Make and Take Workshops. Communications with parents were sent home in both English and Spanish to inform all parents of school activities. This was facilitated by our school translator. Our parents are always made to feel welcome and are often seen volunteering throughout the school. Our positive school climate allows our children to feel safe in a nurturing environment where they can reach their full potential. We continue to make daily decisions based on data. Our high expectations have resulted in exemplary performances from our teachers and our students. We are excited about our accomplishments and look forward to continued success at MPP where “Excellence is Our Standard.”

Elizabeth McCraw, Principal

Jennifer Johnson, SIC Chairperson

SIC Members

Jennifer Johnson – Chairperson

Darla Shaw – Teacher

Christina Vivas – Parent

Elizabeth McCraw – Principal

Rebecca Curry – Community Member

Reta Hanna – Parent

Delia Negron – Community Member

Gayle Morris – Assistant Principal