

**Mt. Zion Elementary**

**State of the School Address**

**December 18, 2015**

# New Faculty / Staff

\* .5 Computer Assistant-

\* .5 ART- TBA

Mrs. Pamela Day

*Cafeteria Manager*

\* Mrs. Rachel Parker



Welcome!

# CCSD Goals

- Elevate the achievement of all students
  
- Close the achievement gap between groups of students
  
- Increase the graduation rate

**\*Implement Common Core Standards**

# MZE Goals

- \* **Increase the percentage of students scoring Met and Exemplary on PASS in all areas**
  
- \* **Increase the percentage of students scoring in desired RIT ranges on MAP**
  
- \* **Close the achievement gap between LEP and Non - LEP students where it exists**
  
- \* **Prepare students to meet or exceed the academic, social, and emotional requirements for entering middle school on level**

**\*Implement Personalized Learning Strategies**

# Exemplary Teacher Performance

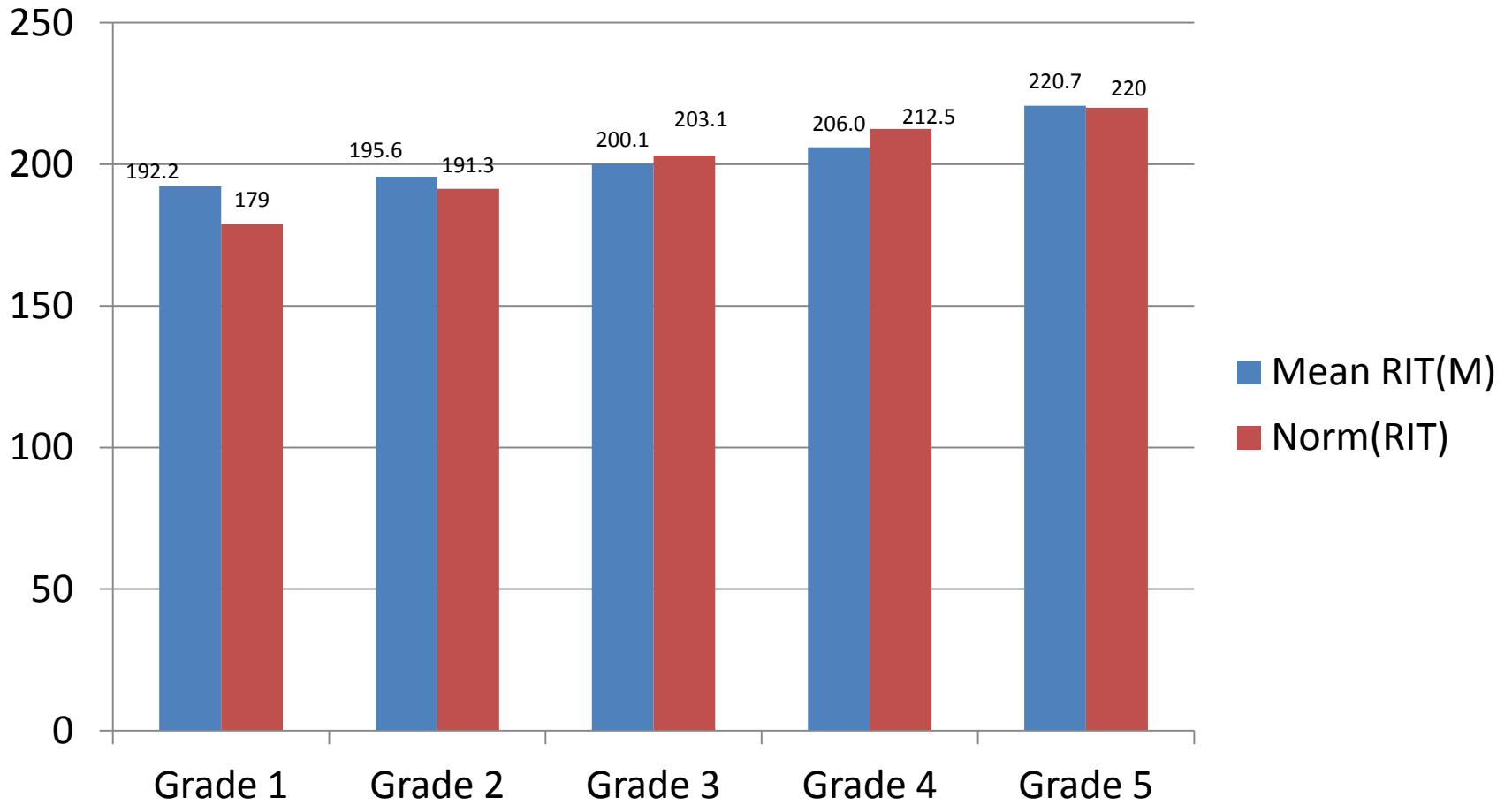
- Mrs. Leigh Ann Graham

Writing 92% Met and Exemplary

Reading / Research 85% Met & Exemplary

Science 100 % Met & Exemplary

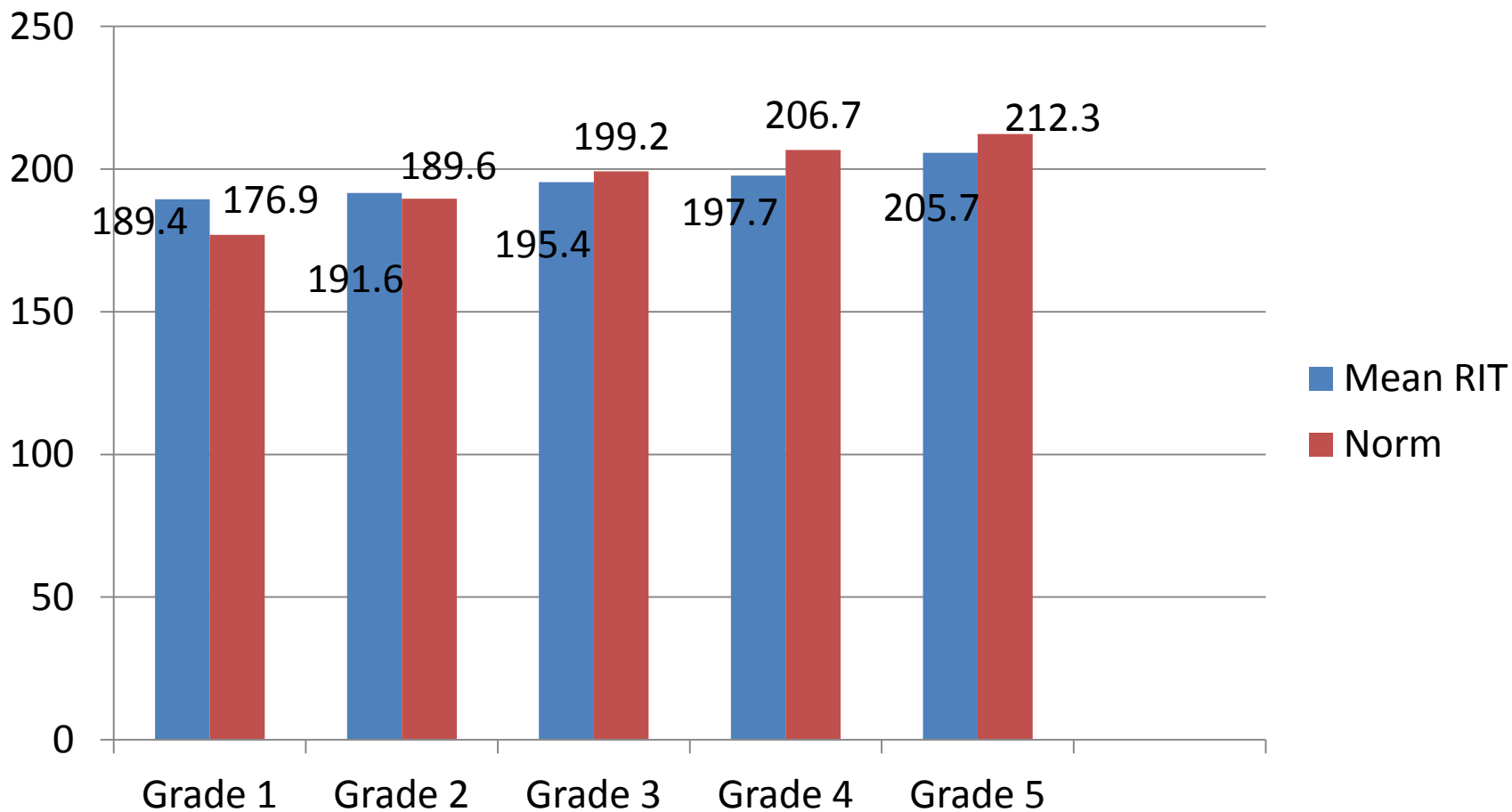
# MAP Spring 2016 Math



# MAP

## Spring 2016

### Reading



# Congratulations!

Fall to Spring MAP



Gains

## First Grade Team

Math +29.9

Reading +29.0

## Second Grade Team

Math +17.6

Reading +18.5

Lang. Usage +21.2

# Exemplary Teacher Performance

## Fall to Spring MAP Growth

### MAP

- Dara Jiravisitcul -Math
- Rachel Parker-Reading
- Geraldine Green (Reading, Math, LU)



# Kindergarten



## Test of Early Literacy

**Fall**

**Spring**

2 Intensive → 1 Intensive

3 Strategic → 7 Strategic

29 Benchmark → 27 Benchmark

# Kindergarten

## Test of Early Numeracy

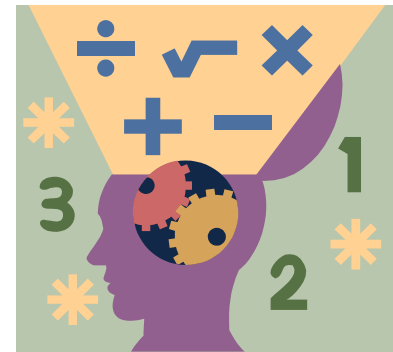
**Fall**

**Spring**

2 Intensive → 1 Intensive

3 Strategic → 7 Strategic

31 Benchmark → 29 Benchmark



# Child Development

## Pre-Test 2015

- Total Pre-Test Percentage (Mean) 31%  
Range: 0% - 97%

## Post-Test 2015

- Total Post-Test Percentage (Mean) 80%  
Range: 11% - 100%

# Service to MZE Children Going Above and Beyond

- Mt. Zion Tennis Team Sponsor:

*Erin Bianco*

# Strategic Priorities

- Personalized Learning
- Smart Goals 2016-17

# Developing a Shared Vision

- What will be the essence of our school five years from now if we are extraordinarily successful?