

MT. ZION ELEMENTARY

REPORT TO PARENTS

2013-14

CCSD Goals

- Elevate the achievement of all students

- Close the achievement gap between groups of students

- Increase the graduation rate

***Implement Common Core Standards**

MZE Goals

- * **Increase the percentage of students scoring Met and Exemplary on PASS in all areas**

- * **Increase the percentage of students scoring in desired RIT ranges on MAP**

- * **Close the achievement gap between LEP and Non - LEP students where it exists**

- * **Prepare students to meet or exceed the academic, social, and emotional requirements for entering middle school on level**

- * **Prepare for implementation of Common Core Standards in 2014-15**

- ***Implement Personalized Learning Strategies**

2012-13 Ratings



- ESEA / Federal Accountability System



2012

2013

A

D

- SC State Report Card



Absolute Rating

Improvement Rating

2012

Average

Excellent

2013

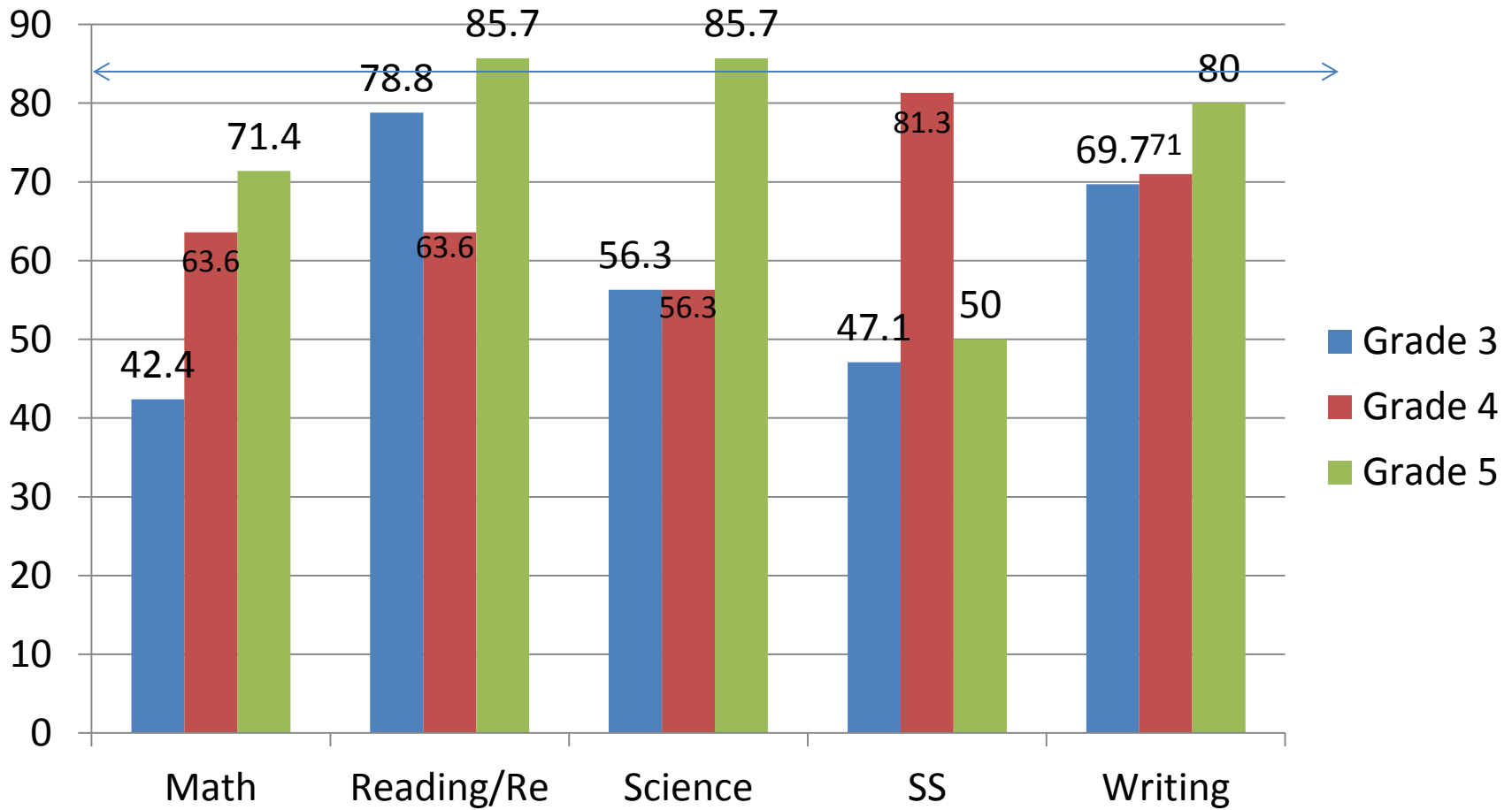
Average

Below Average

- Studer Survey Results

PASS 2013

Met & Exemplary



Exemplary PASS Performance

(Achieving 85% or more Met & Exemplary)

Grade 5

Team: L. Graham & T. Watchorn

ELA 85.7%

Science 85.7%

Exemplary Teacher Performance

- **MRS. LEIGH ANN GRAHAM**

Writing 92% Met and Exemplary

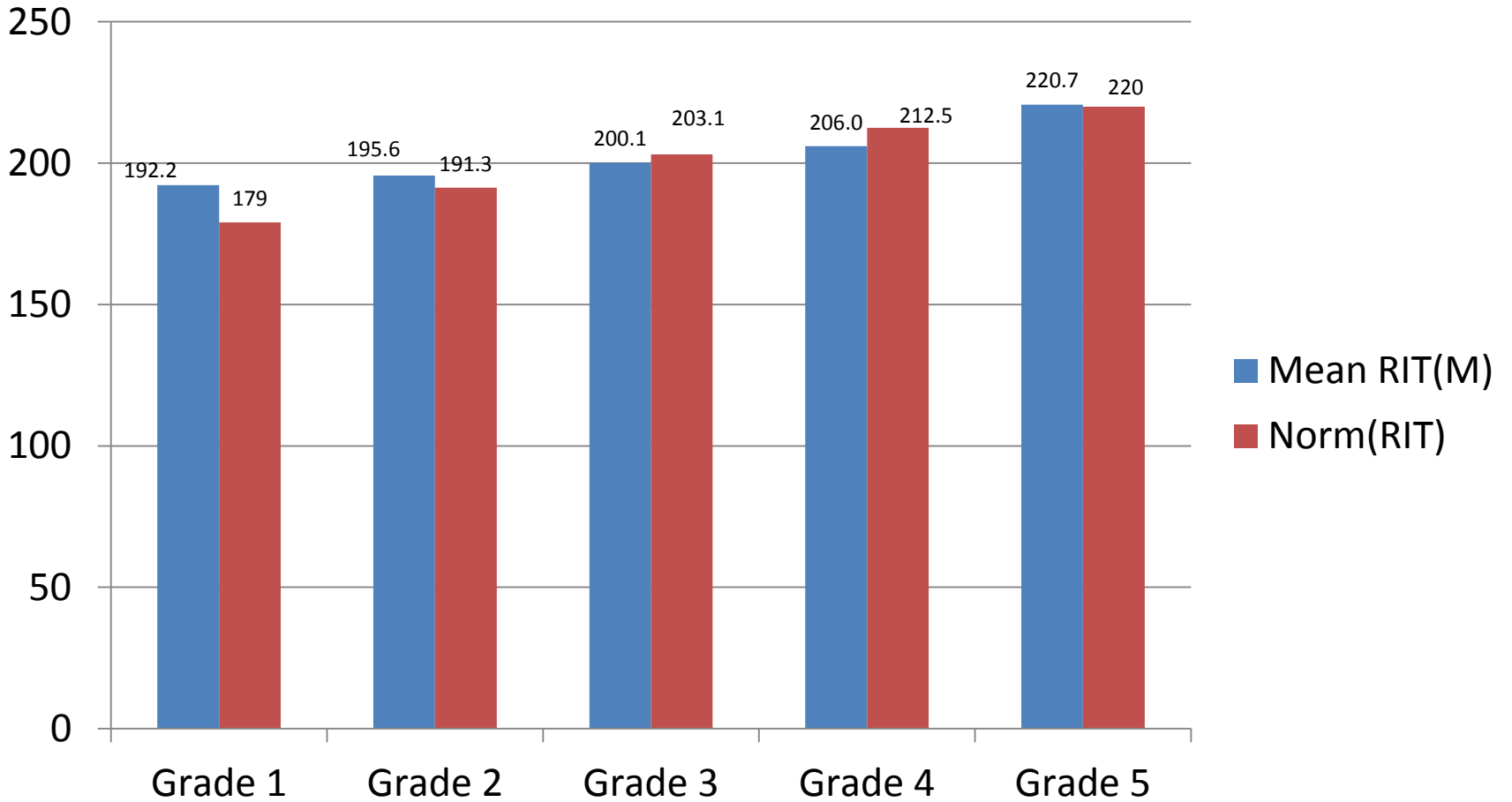
Reading / Research 85% Met & Exemplary

Science 100 % Met & Exemplary

- **MR. THOMAS WATCHORN**

Reading / Research 92% Met & Exemplary

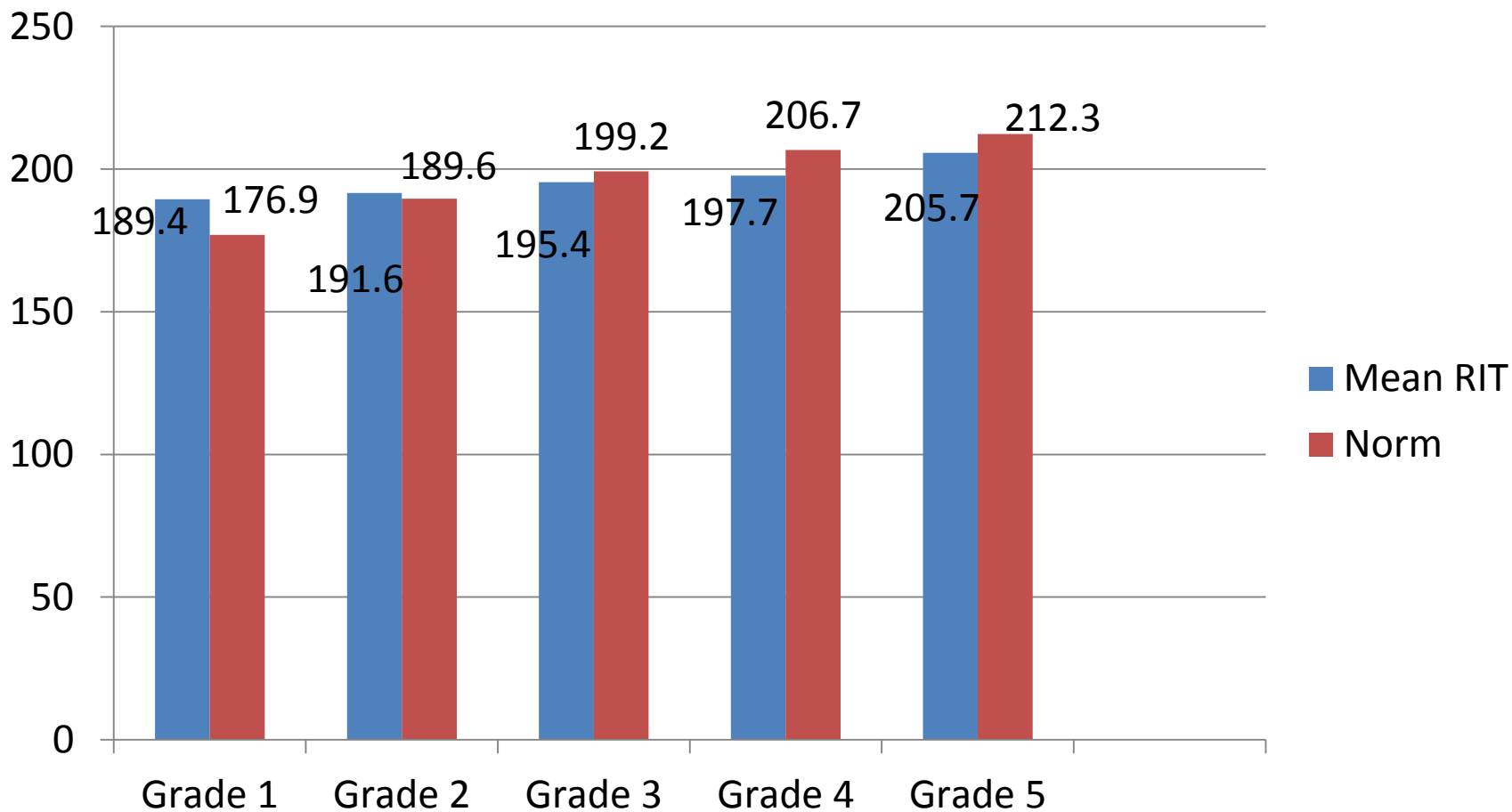
MAP Spring 2013 Math



MAP

Spring 2013

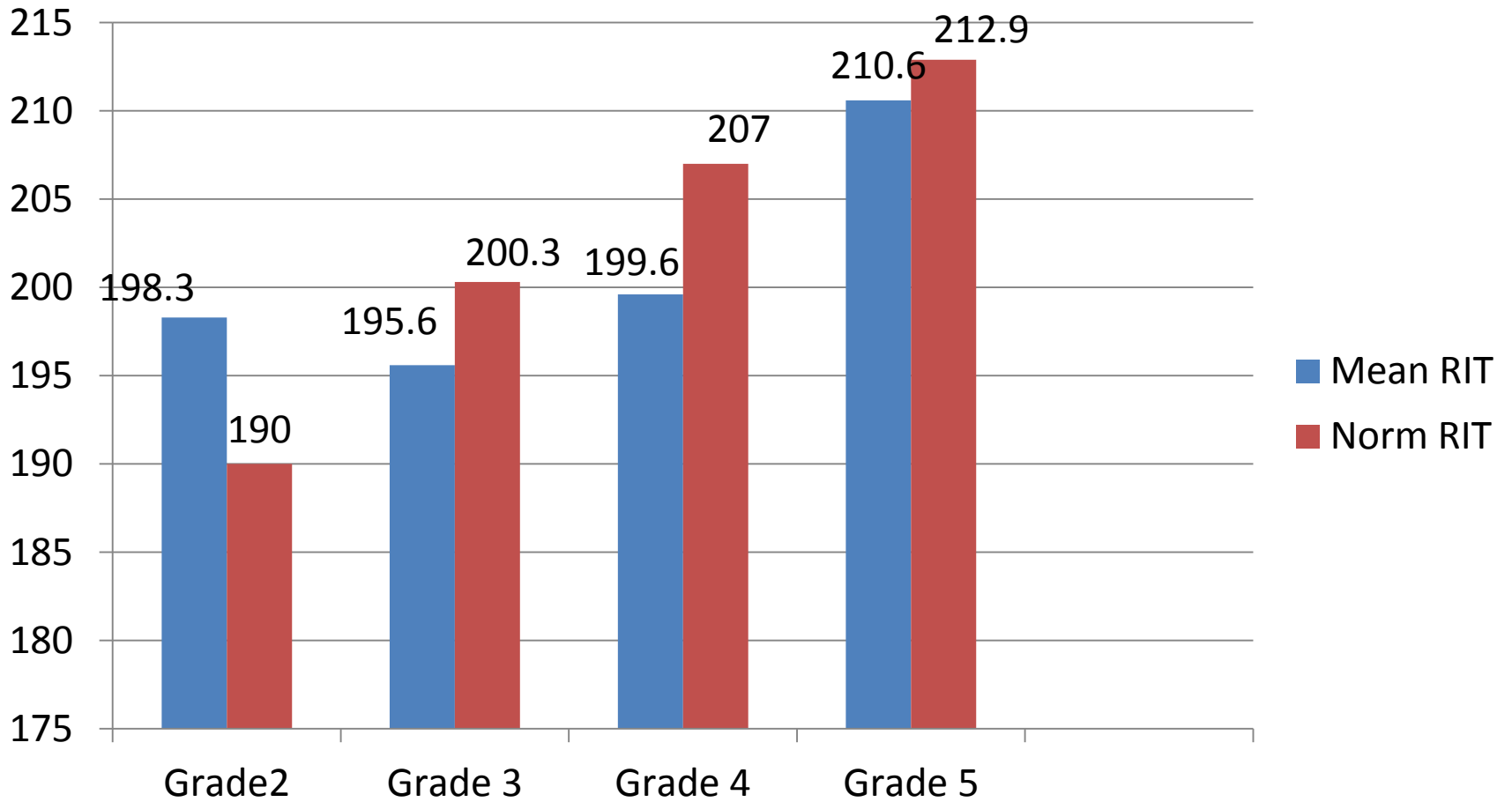
Reading



MAP

Spring 2013

Language Usage



Congratulations!

Fall to Spring MAP



Gains

First Grade Team

Math +29.9

Reading +29.0

Second Grade Team

Math +17.6

Reading +18.5

Lang. Usage +21.2

Exemplary Teacher Performance

Fall to Spring MAP Growth

MAP

- Dara Jiravisitcul -Math
- Rachel Parker-Reading
- Geraldine Green (Reading, Math, LU)

Kindergarten



Test of Early Literacy

Fall

Spring

2 Intensive → 1 Intensive

3 Strategic → 7 Strategic

29 Benchmark → 27 Benchmark

Kindergarten

Test of Early Numeracy

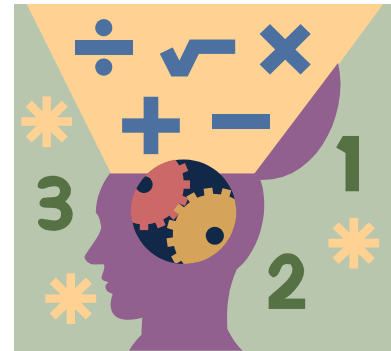
Fall

Spring

2 Intensive → 1 Intensive

3 Strategic → 7 Strategic

31 Benchmark → 29 Benchmark



Child Development

Pre-Test 2012

- Total Pre-Test Percentage (Mean) 31%
Range: 0% - 97%

Post-Test 2013

- Total Post-Test Percentage (Mean) 80%
Range: 11% - 100%

Service to MZE Children Going Above and Beyond

- Facilitator of Fruit and Vegetable Grant

Jozetta Marshall

- Great Expectations Award:

Theresa Ruff

- Mt. Zion Tennis Team Sponsor:

Erin Bianco

Strategic Priorities

- Vision 2016
- Common Core Standards
- Smarter Balanced Assessments
- Personalized Learning
- Smart Goals 2013-14