



## OUR MISSION STATEMENT

In collaboration with our community, Lewisville Middle School provides world class skills and knowledge to be college and career ready!



## WE TAKE PRIDE IN

- ❖ An academic core that is aligned to what students know, understand, and need to know to succeed in college-preparatory English, math, and science
- ❖ A belief that all students matter
- ❖ High expectations and a system of extra help for students
- ❖ Classroom practices that engage students in their learning
- ❖ A Team approach where teachers plan, develop, collaborate to benefit students
- ❖ Support from parents
- ❖ Qualified teachers who know academic content and how to teach young adolescents
- ❖ Continuous use of data to review and revisit school and classroom practices
- ❖ Use of technology for learning to improve students' knowledge and skills
- ❖ Strong leadership who participates with teachers in planning and implementing research-based improvements

# LEWISVILLE MIDDLE SCHOOL

*A Beautiful Institute of Learning*



**Lewisville Middle School**  
**3595 Lancaster Highway**  
**Richburg, SC 29729**  
**(803) 789-5858**

<http://chester.lms.schooldesk.net/>

**Brian Edmond, Principal**  
**Stephanie Barber, Assistant Principal**

**OUR MOTTO:**  
**"WORLD CLASS SCHOLARS**  
**READY TO ROAR!"**



## ATHLETICS

- Basketball
- Cheerleading
- Football
- JV Baseball
- Softball
- Soccer (Boys & Girls)
- Volleyball



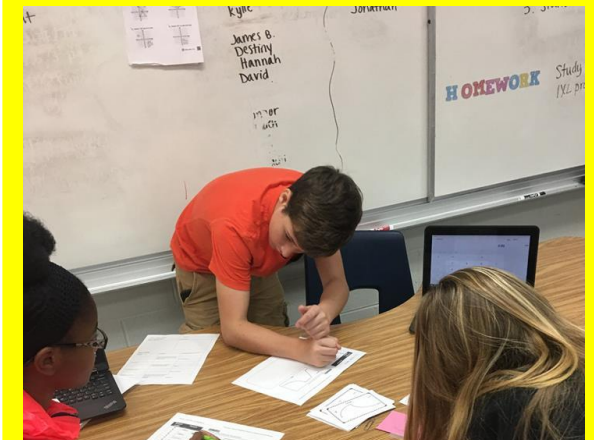
## ELECTIVE OPPORTUNITIES

- Art
- Band
- Chorus
- Project Lead the Way
- Health
- Keyboarding
- Physical Education
- Pro Team



## STUDENT ACTIVITIES

- Concerts
- Assemblies
- Dances
- Community Service Projects
- Field Day
- Field Trips
- Lion Behavior Celebrations
- Multicultural Celebrations
- Various Student Clubs
- Spirit Week
- Spelling Bee
- Tutoring
- Awards and Recognition



## STUDENT CLUBS AND ORGANIZATIONS

- Academic Challenge Team
- Classy Girls Club
- GITI - Engineering Cohort
- FCA (Fellowship of Christian Athletes)
- Jr. Beta Club
- Robotics Team
- Student Council
- Team Read
- Heart & Sole Running Club
- Art Club
- Mentoring Matters





# Lewisville Middle School Student Achievement Data

**2018**  
**SC READY**  
South Carolina College- and Career-Ready Assessments

Percentage Met or Exceeds State Standards				
	ELA		Math	
Sixth Grade	26%	25/97	14%	14/97
Seventh Grade	42%	42/99	22%	22/99
Eighth Grade	52%	52/100	20%	20/100
LMS Total	40%	119/296	19%	56/296

**2018**  
**South Carolina PASS**  
Palmetto Assessment of State Standards

Percentage Met or Exceeds State Standards				
	Science		Social Studies	
Sixth Grade	34%	34/97		
Seventh Grade			72%	72/99
Eighth Grade	42%	42/100		
LMS Total	38%	76/197	72%	72/99

### 5<sup>th</sup> Grade ELA & Math SC READY

Levels-ELA	# of Students	% of Students	Levels-ELA Reading	# of Students	% of Students	Levels-Mathematics	# of Students	% of Students
Exceeds	24	22%	Exceeds	24	22%	Exceeds	25	23%
Meet	14	13%	Meet	19	18%	Meet	17	16%
Approaches	31	29%	Approaches	29	27%	Approaches	31	29%
Does Not Meet	31	29%	Does Not Meet	36	33%	Does Not Meet	35	32%

### 5<sup>th</sup> Grade Social Studies SC PASS

Levels	# of Students	% of Students
Exemplary 5	9	9%
Exemplary 4	7	7%
Met	43	43%
Not Met 2	25	25%
Not Met 1	16	16%

#### Column Legend

- A) Number of Student Tested
- B) Percentage of Student Scoring "Does Not Meet Expectations"
- C) Percentage of Students Scoring "Approaches Expectations"
- D) Percentage of Students Scoring "Meets Expectations"
- E) Percentage of Students Scoring "Exceeds Expectations"
- F) Percentage of Students Scoring "Meets or Exceeds Expectations"
- G) Percentage of Students Scoring "Approaches, Meets, or Exceeds Expectations"
- H) Mean (Scale Score) for the total group of students
- I) Standard Deviation (Scale Score) for the total group of students

ELA									
Grade	A	B	C	D	E	F	G	H	I
6	97	22.7	51.5	21.6	4.1	25.8	77.3	514.3	88.0
7	99	25.3	32.3	30.3	12.1	42.4	74.7	588.2	99.5
8	100	21.0	27.0	43.0	9.0	52.0	79.0	632.1	98.1

#### Column Legend

- A) Number of Student Tested
- B) Percentage of Student Scoring "Does Not Meet Expectations"
- C) Percentage of Students Scoring "Approaches Expectations"
- D) Percentage of Students Scoring "Meets Expectations"
- E) Percentage of Students Scoring "Exceeds Expectations"
- F) Percentage of Students Scoring "Meets or Exceeds Expectations"
- G) Percentage of Students Scoring "Approaches, Meets, or Exceeds Expectations"
- H) Mean (Scale Score) for the total group of students
- I) Standard Deviation (Scale Score) for the total group of students

Math									
Grade	A	B	C	D	E	F	G	H	I
6	97	44.3	41.2	11.3	3.1	14.4	55.7	468.9	73.6
7	99	26.3	51.5	15.2	7.1	22.2	73.7	536.9	73.9
8	100	26.0	54.0	13.0	7.0	20.0	74.0	571.6	69.9

#### Science Column Legend

- A) Number of Students Tested
- B) Percentage of Students Scoring "Does Not Meet Expectations"
- C) Percentage of Students Scoring "Approaches Expectations"
- D) Percentage of Students Scoring "Meets Expectations"
- E) Percentage of Students Scoring "Exceeds Expectations"
- F) Percentage of Students Scoring "Meets or Exceeds Expectations"
- G) Mean (Scale Score) for the total group of students
- H) Standard Deviation (Scale Score) for the group of students

Science									
Grade	A	B	C	D	E	F	G	H	I
6	97	29.9	35.1	21.6	13.4	35.1	70.1	1645.3	16.0
8	100	23.0	35.0	35.0	7.0	42.0	77.0	1846.1	16.1

#### Social Studies Scores by Grade Level

##### Social Studies Column Legend

- A) Number of Students Tested
- B) Percentage of Students Scoring "Not Met"
- C) Percentage of Students Scoring "Met"
- D) Percentage of Students Scoring "Exemplary"
- E) Mean (Scale Score) for the total group of students
- F) Standard Deviation (Scale Score) for the group of students

Social Studies						
Grade	A	B	C	D	E	F
7	99	27.3	40.4	32.3	72.7	628.0
						43.2



# Lewisville Middle School

*A Beautiful Institute of Learning*

## School Improvement Council Officers

**David Loftin**

*Lewisville Middle School Improvement Council Chair*

**Rachel Owens**

*Lewisville Middle School Improvement Council Co-Chair*

**Susan Hopper**

*Lewisville Middle School Improvement Council Secretary*

**Najja Lyle**

*Lewisville Middle School Teacher of the Year*

**Brian A. Edmond**

*Principal, Lewisville Middle School*

**Stephanie Barber**

*Assistant Principal, Lewisville Middle School*