

Purpose of Annual Report

Parents and the community are provided a report each year which identifies the school's accomplishments and indicates the progress being made to achieve the goals of their School Renewal Plan. The School Improvement Council and principal work together to create this annual report

Our School

Lewisville Elementary School is a rural school located in the Richburg community, which is part of Chester County. We are home to approximately 578 students in grades Pre-K through 5. We have two half-day pre-k classes. Our goal is to promote teaching and learning through engaging, rigorous, and varied instructional strategies.



LES is a Net SCOPE Partner School with Winthrop University's Net SCOPE Project!

What does this mean? It means that we help prepare future teachers. In turn, we receive professional development support from Winthrop University. We have a liaison assigned to our school who works with our teachers, and Winthrop interns to meet school and district goals.

Activities, Opportunities, and Recognitions

- Student Council
- Flag Patrol
- Safety Patrol
- Standards Based Field Trips
- D.A.R. E. Program
- 21st Century Afterschool Program/F.A.S.T
- Honor Roll/Perfect Attendance Recognitions
- Student of the Month Recognition
- Junior Achievement (Grades K-5)
- Founder's Bank Branch for LES students
- Parent Teacher Organization (PTO)
- School Improvement Council / Title I Meetings
- Parent Volunteers
- Teacher Cadets (Lewisville High School)
- Jr. ROTC Classroom Volunteers (Lewisville High School)
- Weekly Parent Communication Folders
- Parent/Teacher Communication Logs
- (2) Open Houses
- Parent Workshops (MAP, PASS, Math, Reading, Computer, Bullying)
- Family Nights at Chic-Fil-A, Golden Wok, McDonald's, Charlotte Knights Baseball Game
- Fall Festival
- Sweetheart Dance
- Family Bingo Night
- Principal's Reception
- Parent Resource Center
- School-Parent Compact
- Parent Involvement Policy
- Monthly Parent Newsletter
- Box Tops for Education
- IGA School Rewards
- PPG Teacher Grants
- J.M. Sims Teacher Grants
- 4-H Club
- WLES School News Show
- Relay for Life Fundraisers
- Career Week
- Bullying Prevention Program
- Curriculum Based-Student Assemblies
- Grade Level Performances
- Musical Performances
- Superintendent's Art Show
- Field Day
- BI-LO Booster Plus
- Computer Labs
- iPADS for Resource Classrooms
- Character Education
- Special Olympics
- Spelling Bee
- (2) Response to Intervention Programs for grades K-5
- Parent Facilitator
- Lt. Governor's Writing Contest
- Dr. Doug, USC Scientist (Hands-On Science Programs)
- Good News Club
- Winthrop Interns
- Gifted and Talented Program
- Red Ribbon Week

Lewisville Elementary School

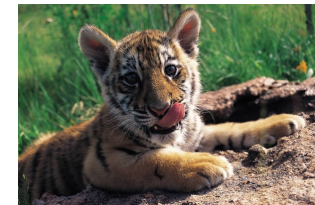
4006 Lewisville High School Road
 Richburg, South Carolina 29729
 Telephone (803) 789-5164
 Fax (803) 789-3954
<http://les.chester.k12.sc.us>

Annual Report to Parents

April 24, 2012

Palmetto Silver Award Winning School

2009, 2010, 2011



"Feel the Pride!"

Accredited by Southern Association
 of Colleges and Schools (SACS)

Student Enrollment: 578

Annual School Report Card Ratings

Year	Absolute Rating	Growth Rating
2008	Below Average	At-Risk
2009	Average	Good
2010	Average	Good
2011	Average	Average

Wanda F. Frederick, Principal
wfrederick@chester.k12.sc.us

Teresa Edwards, Assistant Principal
tedwards@chester.k12.sc.us

Lewisville Elementary School

2011-2012 School Term

School Improvement Council (SIC)

David Loftin (Parent), Chairperson

Angel Waits (Parent), Co-Chair

Kathryn Byar (Teacher), Secretary

Wanda Brown (Parent)

Melissa Westbrook (Parent)

Lesley Stewart (Teacher)

Felicia McGowan (Teacher)

Tami Talbert (Community Member)

Jerry Locke (Community Member)

Ann Hicklin (Community Member)

Wanda Frederick (Principal), Ex-Officio

Teresa Edwards (Assistant Principal), Ex-Officio

SIC members may be contacted by e-mail

and / or through the school office.

Mission of LES

The staff, parents, and community of Lewisville Elementary School will work together to provide all students with educational opportunities in a safe and positive learning environment.

We believe:

- Students' learning needs should be the primary focus of all decisions impacting the work of the school.
- Students learn best when they are actively engaged in the learning process.
- Each student is a valued individual with unique physical, social, emotional, and intellectual needs.
- A student's self-esteem is enhanced by positive relationships and mutual respect between students and staff.

PASS (Palmetto Assessment of State Standards)

Percentage of Met & Above

Year	ELA	Math	Science	Social Studies	Writing
2009	76.4%	69.6%	64.8%	72.3%	70.5%
2010	75.5%	72.8%	64.3%	75.4%	72.8%
2011	73.7%	71.5%	65.1%	78.5%	65.7%

Measures of Academic Progress (MAP)

Student achievement in reading and math is measured each year during the fall, winter, and spring for students in grades K-5. Students take these tests in the computer labs. They each have individual goals and targets for each subject. Below are the results for this school year:

	<u>Reading Proficiency</u>	<u>Math Proficiency</u>
Grade 2	61%	64%
Grade 3	77%	67%
Grade 4	91%	89%
Grade 5	91%	78%

Students are recognized with a school-wide celebration after the spring assessment. Students who reach their target are afforded the opportunity to participate in our MAP celebration.

Benchmark Assessments

Students in grades 2-5 are given benchmark assessments in the four core subject areas of English/language arts, math, science, and social studies at the end of each nine weeks. The purpose of these assessments is to provide teachers with student data to guide their daily instruction.

School Renewal Plan Strategies

Performance Goal: Student Achievement

- * Intervention programs for grades K-5 were added to assist struggling students in reading and math. Two full time certified teachers and a highly qualified paraprofessional work with small groups of students on a daily basis.
- * Parent workshops were held to provide information about MAP assessments.
- * MAP data were analyzed for kindergarten through second grade students in reading and math to identify student strengths and weaknesses. The school's Data Team assisted with test score analysis.
- * Promethean board were added to all regular classrooms, intervention rooms, music and art to support, enhance reading instruction.
- * Netbook computers were purchased for the SMART room, to assist with K-2 intervention in reading and math.
- * Benchmark data for reading and math were analyzed for grades 2-5. Individual teachers met with the principal to determine grade level and classroom strengths and weaknesses.
- * The technology lab allowed for flexible scheduling to assist teachers with research-based projects in ELA, science, and social studies.

Performance Goal: School Climate

- * Opportunities were provided to increase parental involvement and participation. These included Parent-Teacher Organization and School Improvement Council meetings.
- * PASS and MAP workshops were provided for parents.
- * Parents were provided access to the Parent Portal to access student grades on a weekly basis.
- * Intervention conferences and celebrations were held to increase student attendance.
- * Administration held conferences with teachers who were frequently absent from work.

Performance Goal: Teacher /Leadership

- * Teachers were afforded professional development opportunities by attending conferences, workshops, and seminars.
- * The school's Data Team, Professional Development and Training Team, and School Leadership Team promoted teacher leadership and teacher led professional development based on needs assessment data.
- * School wide GBE research-based goals were established to increase parental involvement and student achievement.