

School Organization and Contact

School Improvement Council Members:

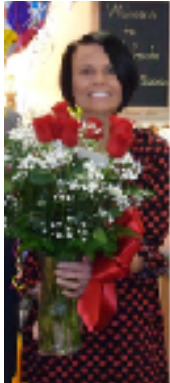
Annelise Martens- Chair
Randall Lowder - Vice Chair
Gwendolyn Nelson - Secretary

Melanie Dees	Elizabeth Briley
Monica Twine	Brenda Clark
Pat Terry	Christie Hale
Terri Bell	Ashley Chase
Loretta Brailsford	Jessica Hill
Tscharner Lord	

Teachers of the Year

2017-2018

Christy Nexsen



2018-2019

Susan
Freeman



Vision of Manning Primary School

The vision of Manning Primary School is to create a nurturing environment where all students can be successful.

Mission Statement for Clarendon School District Two

The mission of Clarendon School District Two is "Educating Children."



2018-2019

SIC Annual Report to Parents Manning Primary School



125 North Boundary Street
Manning, South Carolina 29102
Office: (803) 435-2268
Fax: (803) 435-8737

Instructional Hours:
7:50 a.m. - 2:40 p.m.



Mrs. Brenda C. Clark, Principal
Mrs. Tscharner Lord,
Assistant Principal

School Highlights

Google with Grand-Friends

Devices with Dad-Friends

Megabytes with Mom-Friends

Project-Based Learning

Manning Primary School Facebook Page

Fitness and Nutrition Initiative

SMILES Dental Clinic

Rosetta Stone

Advisory/Advisee

Super Readers Program

Digital Citizenship

21st Century Community Learning Center Program

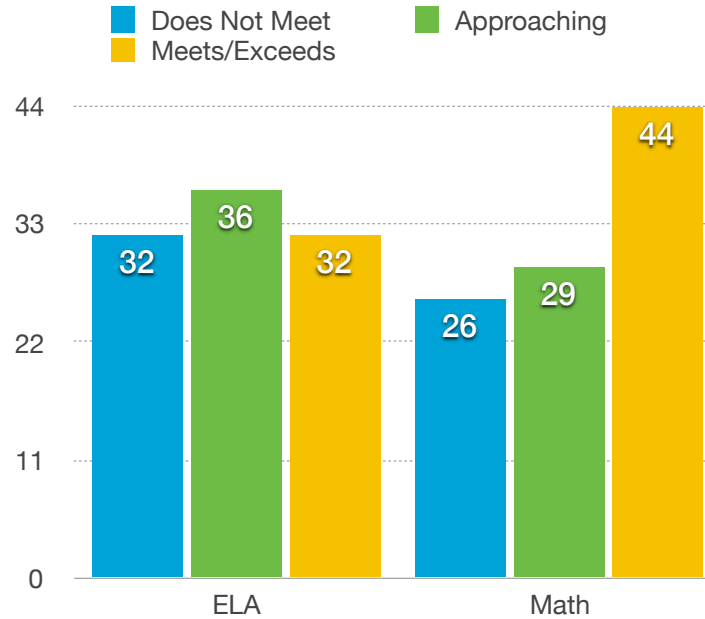
Clarendon Christian Learning Center

Project Lead the Way

learning.com

Carolina Consortium of Enterprise Learning

2017 SC Ready Results



School Demographics

Student Enrollment 404

64% African American

24% White

6% Hispanic

6% Other

34 Certified Staff Members

2 National Board Certified Teachers

21 Classified Staff Members

Technology

1:1 devices for every student

SmartBoards, scanners, sound bar and printers in every classroom

Computer lab with Rosetta Stone Program and learning.com

Computer lab for research

Progress Toward 2017-2018 Goals

By the end of the 2017 - 2018 school year, MPS students' reading scores will increase by 10% as measured by state wide testing and Benchmark assessments.

- State testing data will be reported fall 2018.

By the end of the 2017-2018 school year, students reading on grade level will increase by 20% as measured by Next Steps in Guided Reading.

- Met: Students reading on grade level increased by 33.9%.

By the end of the 2017 - 2018 school year, MPS students' math scores will increase by 10% as measured by state-wide testing and Benchmark assessments.

- State testing data will be reported fall 2018.