

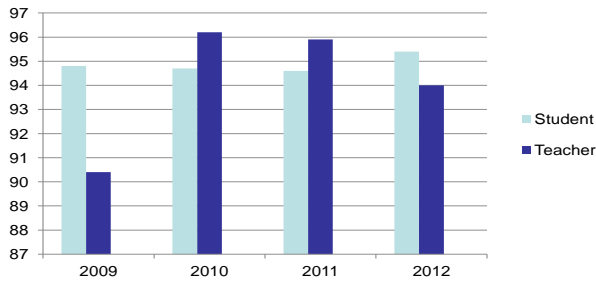


The mission of Manning Early Childhood Center is educating children.

2012-2013 School Goals...

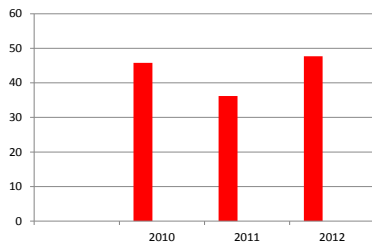
1. Increase staff and student attendance to 96% (Report Card Criteria).

Student and Teacher Attendance

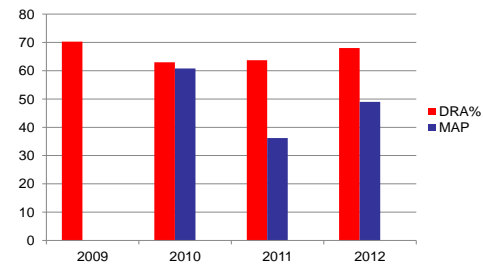


2. Increase student achievement through the implementation of the Common Core State Standards.

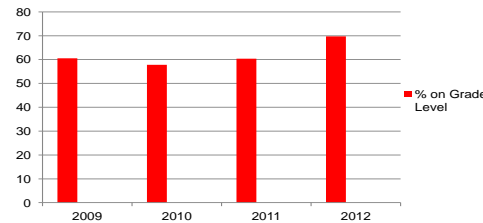
First Grade Math
Percent of Students on Grade Level



First Grade Spring
DRA and MAP
Percent of Students on Grade Level



Kindergarten Dominie Spring Assessments
Percent of Students on Grade Level



3. Achieve National Association of the Education of Young Children re-accreditation.

The re-accreditation visit took place in March 2013.

Assessments:

- Dial 3
- Phonological Awareness Literacy Screening
- Dominie and Portfolio Assessment
- Developmental Reading Assessment (DRA)
- Measures of Academic Progress (MAP)
- First Grade Common Assessments
- Waterford
- Teacher Checklists
- Report Cards



Instructional Program

The instructional program at Manning Early Childhood Center is based on the Common Core State Standards (CCSS), National Association for the Education of Young Children (NAEYC) Standards, Child Development Pilot Program Guidelines, and the needs of students. Teachers use the CCSS and state issued adopted textbooks, sets of leveled books, Science and Math manipulatives, and a variety of other materials. The Literacy Program is based on a "Balanced Literacy" approach including Foundational Skills, Shared Reading, Independent Reading, Read Aloud, and Writer's Workshop. Technology is an integral part of the curriculum. All classes have interactive white boards and access to i-pods and i-pads. Classes go weekly to the computer lab using the Waterford reading, math, and science program.



The vision of Manning Early Childhood Center is a school that teaches all children in a safe and nurturing environment where every child has the opportunity to experience academic and social success.

Programs at MECC...

Morning Show
Literacy Groups
Raise A Reader
Computer Lab
Inclusion Model
Pre-K 101
Book Fairs
Facebook Page
Parent Portal
School-Wide Play
Character Counts
Foster Grandparents
Character Education
Response to Intervention
Save the Children Literacy
School Intervention Teams
Child Development Pilot Project
SMILES Dental Clinic
Alert Now Notification System
Inter-Agency Partnerships
Developmentally Delayed Class
Waterford Computer Program
Lunch Bunch Mentors and Volunteers
F.E. DuBose Early Childhood Service Learning

MECC Awards

Red Carpet School 2004 and 2010
Exemplary Writing
4 National Board Certified Teachers
Excellent Report Card Rating
Grants: Dollar General,
FMU Center of Excellence,
ASCD, Walmart, Donor's Choose
Accredited By AdvancEd and NAEYC
SIC Honor Roll School 2010

Character Education Program

The Character Education Program is a school, district, and community wide project. A trait of the month is displayed in schools and around the community. MECC recognizes students with "Good Character" through the Character Counts Program and Guidance lessons.



School Profile

- 647 Students
- Grades Pre-K, 5-K, 1st
- 86% Free/Reduced Lunch
- Title I School-Wide Project
- 21% Special Education
- AYP 2003, 2004, 2005, 2007, 2009, 2010, 2011, 2012
- Absolute Rating-Excellent
- Growth Rating-Excellent

School Improvement Council Members

Missey Woodard—Chairman
Teri Tabor—Vice Chairman
Sharmaine Anderson—Secretary
Falecia Miller
Linda Richburg
Sharon Williams
Samantha Parimuha
Mary Cooper
Susan Tyler
Ellen Hamilton
Joni James Jackson
Tammy Roberson
Betty Harrington
Ulysses Conyers

The Annual Summary Report is required by the Education Improvement Act of 1984. The purpose is to inform parents and other community members about the school's progress.

Manning Early Childhood Center

2759 Raccoon Road
Manning, SC 29102

803-473-4744

Fax: 803-473-4777



Annual Report to Parents

Betty Harrington, Principal
Ulysses Conyers, Assistant Principal

Accredited by AdvancED
and



Clarendon School District Two

John Tindal, Superintendent
clarendon2.k12.sc.us/mecc
bharrington@csd2.org