

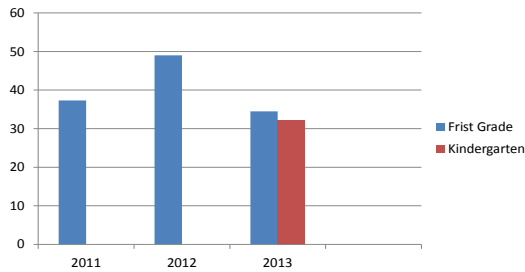


The mission of Manning Early Childhood Center is educating children.

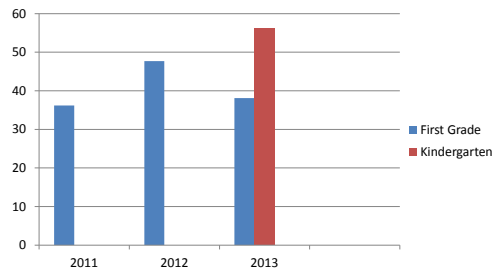
2013-2014 School Goals...

1. Increase the number of students meeting Value Added Growth by 10% as measured by Measures of Academic Progress (MAP).

2013 ELA MAP Achievement



2013 MAP Math Achievement

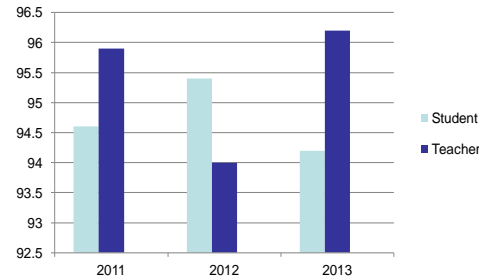


2. Evaluate 100% of the classroom teaching staff utilizing the South Carolina Teaching Standards Evaluation System.

100% of classroom teachers were evaluated utilizing the SC Teaching Standards Pilot Program.

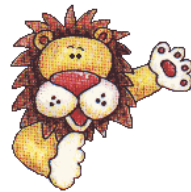
3. Increase staff and student attendance by 2%.

Student and Teacher Attendance



4. Achieve AdvancEd re-accreditation.

The re-accreditation visit took place in March 2014.



Assessments: Dial 4 for Pre-K

Phonological Awareness Literacy Screening

Dominie and Portfolio Assessment

Developmental Reading Assessment (DRA)

Measures of Academic Progress (MAP)

First Grade Common Assessments

Waterford

Teacher Checklists

Report Cards

Instructional Program

The instructional program at Manning Early Childhood Center is based on the Common Core State Standards (CCSS), National Association for the Education of Young Children (NAEYC) Standards, Child Development Pilot Program Guidelines, and the needs of students. Teachers use the CCSS and state issued adopted textbooks, sets of leveled books, Science and Math manipulatives, and a variety of other materials. The Literacy Program is based on a "Balanced Literacy" approach including Foundational Skills, Shared Reading, Independent Reading, Read Aloud, and Writer's Workshop. Technology is an integral part of the curriculum. All classes have interactive white boards and access to I-pods and I-pads. Classes go weekly to the computer lab using the Waterford reading, math, and science program.



The vision of Manning Early Childhood Center is a school that teaches all children in a safe and nurturing environment where every child has the opportunity to experience academic and social success.

Programs at MECC...

Morning Show
Literacy Groups
Raise A Reader
Computer Lab
Inclusion Model
Remind 101
Book Fairs
Parent Partners
Facebook Page
Parent Portal
School-Wide Play
Character Counts
Foster Grandparents
Character Education
Response to Intervention
Save the Children Literacy
School Intervention Teams
Child Development Pilot Project
SMILES Dental Clinic
Inter-Agency Partnerships
Developmentally Delayed Class
Waterford Computer Program
BlackBoard Connect Notification System
Lunch Bunch Mentors and Volunteers
F.E.DuBose Early Childhood Service Learning

MECC Awards

Red Carpet School 2004 and 2010
Exemplary Writing
6 National Board Certified Teachers
Excellent Report Card Rating
Grants: Dollar General,
FMU Center of Excellence,
ASCD, Walmart, Donor's Choose
Accredited By AdvancEd and NAEYC
SIC Honor Roll School 2010

Character Education Program

The Character Education Program is a school, district, and community wide project. A trait of the month is displayed in schools and around the community. MECC recognizes students with "Good Character" through the Character Counts Program and Guidance lessons.



School Profile

- 618 Students
- Grades Pre-K, 5-K, 1st
- 82% Free/Reduced Lunch
- Title I School-Wide Project
- 19% Special Education
- Absolute Rating-Excellent
- Growth Rating-Good

School Improvement Council Members

Missey Woodard-Chairman

Sean Briley-Vice Chairman

Teri Tabor -Secretary

Cheryl Richburg

Sharon Williams

Mary Cooper

Ellen Hamilton

Tammy Roberson

Ulysses Conyers

WJ Frierson

Linda Richburg

Samantha Parimuha

Susan Tyler

Joni James Jackson

Betty Harrington

Briana Whitaker

The Annual Summary Report is required by the Education Improvement Act of 1984. The purpose is to inform parents and other community members about the school's progress.

Manning Early Childhood Center

2759 Raccoon Road

Manning, SC 29102

803-473-4744

Fax: 803-473-4777



Annual Report to Parents

Betty Harrington, Principal

Ulysses Conyers, Assistant Principal

Accredited by AdvancED
and



Clarendon School District Two

John Tindal, Superintendent

clarendon2.k12.sc.us/mecc

bharrington@csd2.org