



Beech Hill Elementary

A 2012 Palmetto's Finest School

1001 Beech Hill Road, Summerville, SC 29485 Phone: 843.821.3970 Fax: 843.821.3979

Website: <http://dorchester.bhe.schoolfusion.us>

René Wyatt Harris, Principal • Virginia Ross and Jacki Atkinson, Assistant Principals



2012-2013 Annual School Report to the Parents

South Carolina statute (Act 135 of 1993) requires every School Improvement Council (SIC) to publish and distribute a *Report to the Parents* by April 30 of each year. The report highlights the school's progress of the council's annual goals.

The *School Improvement Council of Beech Hill Elementary* is pleased to present this comprehensive report. Our achievement is directly linked to the strong collaboration among home, school and the community.

Our mission, *Beech Hill will lead the way to lifelong learning through excellence, leadership and empowerment*, drives our actions. We work to ensure that *all students meet and exceed academic benchmarks*. We also believe all students should:

- Be challenged to reach their full potential
- Follow the PBIS guidelines and expectations
- Help promote a safe and nurturing environment
- Be active participants in the learning process
- Develop skills to become lifelong learners and leaders who:
 - Communicate through and appreciate the arts (CREATE)
 - Act responsibly toward the environment (NURTURE)
 - Value themselves and their community (CONNECT)
 - Apply technology and innovation to aspire (DREAM)

Through shared decision making, a positive school climate and high expectations, Beacons continue to excel in academics as we aim to address the needs of the *whole child*.

Dana Scott,
SIC Chair

René Wyatt Harris,
Principal

School Improvement Council Members

Elected

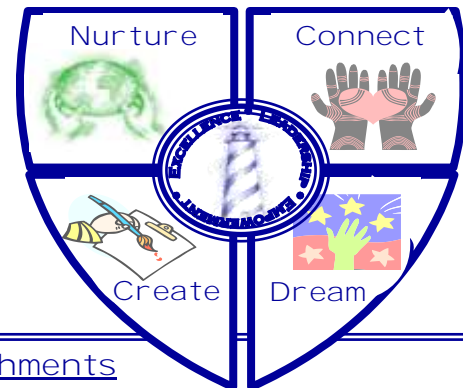
- Kathy Cannavaro
- Brett Gillis
- Kim Hatchett
- Brian Hayes
- Melinda Jones
- Lore Samyn-Klein
- Donna Mulheir
- Dana Scott
- Shayne Whitaker
- Jennifer Wilde
- Ryan Williams
- Alex Singleton

Ex-Officio

- Jacki Atkinson
- Kellie Boomershine
- Angie Grant
- Bert Loving
- Paula Luciano
- Michelle Pruitt
- Ginny Ross
- Kelley Wanish
- Carol Wilson

Appointed

- Cindy Ellis
- Scott Mongillo
- Stacey Quade
- Anita Ruff
- Stefani Satterfield
- Sue Willems



Accomplishments

- Named *TD Bank's Palmetto's Finest*– 2012
- *Fuel Up to Play 60* Participant
- Recognized as a *Cool School* (WCBD– Channel 2)
- Recognized on the *Today Show* for *Art for the Sky* project
- Distinguished Arts Program (DAP) Grant Recipient (\$18,000)
 - ◆ Lisa Gleason and Lisa Ammerman, Grant Writers
- Recognized for *Art for the Sky* project (*Post & Courier*)
- *Jennifer Fusco* named as Dorchester 2 District Honor Teacher
- Home to 3 District Teacher of the Year Recipients
- 100% of Staff trained– *Darkness to Light* program
- Staff Kickball Team– League Champions
 - ◆ James Hearn, Coach
- District Academic Competitions
 - ◆ School Spelling Bee Champion– Aaliyah Gethers
 - ◆ Math is Cool Competition– 4th Grade– First Place
 - ◆ Math is Cool Competition– 5th Grade– Second Place
 - ◆ 4th Grade Quiz Bowl–First Place
 - ◆ 5th Grade Quiz Bowl–Second Place
 - ◆ Robotics –Boys' Team Advanced to State Competition
- School Report Card– Absolute Ratings
 - ◆ 2010-Excellent
 - ◆ 2011-Excellent
 - ◆ 2012-Excellent
- School Report Card– Improvement Ratings
 - ◆ 2010– Excellent
 - ◆ 2011– Excellent
 - ◆ 2012– Excellent
- Palmetto Gold and Silver Awards
 - ◆ 2010 - General Performance (Gold)
 - ◆ 2011- General Performance (Gold)
 - ◆ 2012– General Performance (Gold)
 - ◆ 2010 - Closing the Achievement Gap (Silver)
 - ◆ 2011- Closing the Achievement Gap (Gold)
 - ◆ 2012- Closing the Achievement Gap (Silver)
- Adequate Yearly Progress (AYP)
 - ◆ Met 2010– 21 out of 21 objectives
 - ◆ Met 2011– 21 out of 21 objectives
- Federal Accountability Grade:
 - ◆ 2012- A (97.7)

2012-2013 Goals Accomplishments

<u>Goal #1-Enhance the CONNECT Lighthouse Initiatives</u>	
<input checked="" type="checkbox"/>	Fuel up to Play 60 Initiative Grant (Laurie Miller, Food Services Manager)
•	Addition of <i>playground structure</i> on large recess field *
<input checked="" type="checkbox"/>	Health/Fitness related Clubs: Running, Kickball teams, Walking Club
•	PBIS- Bus of the Week and SHINE Store *
<input checked="" type="checkbox"/>	Blood Drive (32 pints), Pennies for Patients (\$4,501)
<u>Goal #2- Enhance the CREATE Lighthouse Initiatives</u>	
<input checked="" type="checkbox"/>	Cultural Arts CREATE Week-Artist-in-Residence Programs *
<input checked="" type="checkbox"/>	Book Authors' Visits
<input checked="" type="checkbox"/>	Arts related Clubs: Glee, Jugglers, Drum-line, Chorus, and Drama
<u>Goal #3- Enhance the DREAM Lighthouse Initiatives</u>	
•	Participation in STEM and SPAWAR Initiatives
<input checked="" type="checkbox"/>	Participation in Citadel's Trebuchet Challenge
<input checked="" type="checkbox"/>	SMART (Science, Math and Technology) Night *
<input checked="" type="checkbox"/>	Acquisition of 60 iPads, 30 webcams and 20 computers *
<input checked="" type="checkbox"/>	Creation of the Renaissance Room- dedicated to STEM activities
<input checked="" type="checkbox"/>	Technology related Clubs: Techno, Cyber-Video, SWAT Team
<u>Goal #4-Enhance the NURTURE Lighthouse Initiatives</u>	
<input checked="" type="checkbox"/>	No Trash Tuesdays
<input checked="" type="checkbox"/>	The completion of three outdoor learning environments
<input checked="" type="checkbox"/>	Nurture/Ecology related clubs: Garden, BHES Buddies, At Your Service
<input checked="" type="checkbox"/>	School-wide Recycling program
*	Made possible by funding partnerships with our school and PTA

2013-2014 Goals

<u>Goal #1-Continue to enhance the additional /existing Lighthouse initiatives</u>	
•	Explore additional resources to promote lighthouse focus
•	Recruit and secure district and community support for lighthouses
•	Sponsor family nights and community events to highlight houses
•	Link Common Core and 21st Century Learning to lighthouse focus
•	<i>Develop related service learning opportunities</i>
<u>Goal #2- Add a lighthouse to address health and fitness</u>	
•	Combat childhood obesity through exercise and physical activities
•	Provide educational programs related to healthy food choices
•	<i>Develop related service learning opportunities</i>
<u>Goal #3- Add a lighthouse to address college to career readiness</u>	
•	Promote critical thinking using programs like <i>Thinking Maps</i>
•	Promote the development of "soft skills" via programs like <i>Focus Five</i>
•	Continue to promote Character Education program (PBIS)
•	Provide instructional opportunities to enhance content focus
•	Provide educational programs related to Common Core
•	<i>Develop related service learning opportunities</i>

Parent, Family & Community Involvement

- | | |
|----------------------------|-------------------------------|
| • SMART Night | • Cruisin' in to Kindergarten |
| • Book Fairs | • Chillin' on the Hill |
| • Day of Caring | • PTA/Volunteer Opportunities |
| • The HOUSE Awards Program | • GRAND Beacons Night |
| • Camp Read & Write Night | • Veterans Day Celebration |
| • Spring Musical | • SPLASH Nights |
| • Kindergarten Orientation | • Autumn Daze Fall Festival |
| • Big Fox/ Little Fox | • Lighthouses on Location |

Beech Hill By the Numbers

School Year	2011	2012
Student Enrollment	1,159	1,186
Certified Teachers	77	80
Classified Staff Members	36	45
Administrators	3	3
School Counselors	2	2
Instructional Coaches	1.5	2
Parent and Community Volunteers	345	276
PASS % Met /Exceeding	2011	2012
ELA	97.7	92.7
Writing	95.9	92.5
Math	95.4	91.8
Science	83.9	84.2
Social Studies	92.7	90.8

The Beacon Experience

Academic Support

- Thinking Maps
- Read 180/System 44
- Academic Teams
- Scholastic Reading Inventory
- Scholastic Math Inventory
- AimsWeb
- ENI-Benchmarks
- BHES Awards Program
- Mad Science
- PASS Cruisers Tutoring
- Gifted and Talented classes
- Math Boot Camp
- 100 Book Club

Character Development

- Big Fox/Little Fox Mentoring
- PBIS SHINE Store
- Red Ribbon Week
- No/Low Trash Tuesdays
- Terrific Kids
- Career Awareness Day

After-School Clubs

- Juggling Club
- Drama Club
- Beat at the Beech Drum-line
- Cheerleading Teams
- Chorus
- Trebuchet Team
- Robotics

Enrichment Activities

- Lighthouse Weeks
- PTA Reflections
- Storybook Character Day
- Gullah Festival
- State Book Award Election
- 52 WERD Clubs (examples)
- Clay Animation
- Guitar
- Cake Decorating

Technology

- Camp Invention
- iPads
- iPods
- WebCams
- SMARTBoards
- SMART Response Clickers
- Airliners
- COMPASS/Waterford
- Voyager
- Study Island
- FASTT Math
- Accelerated Reader
- Starfall
- Think Central Math
- BrainPOP
- Beacon Bistro
- Leadership Development
- Tied to Brightness Breakfast
- Strands on the Beech Tea
- The Recycle Club
- Flag Bearers Corps
- Student Leadership Council
- Leadership Summit
- Career Shadow Day
- WBHS Morning Show
- Market Day
- PBIS Shine Patrol
- Service Learning Initiatives

Service Learning Initiatives

- Low Country Food Drive
- Relay for Life
- Jump Rope for Heart
- Caps for Caring events
- Red Cross Blood Drive
- SPCA Pet Supplies Drive
- Book Donations Drive
- Caps for Braden
- Community Book Swap