

School Report Card

- ◆ Adequate Yearly Progress.....No
- ◆ National Board Certified Teachers

Cynthia Jeffcoat

Lori Moore

Cameron Worten

Trisha Hughes

Julie Hartley

- ◆ Teacher of the Year
Cecelia Roberts

Enrichment

- ◆ ABBIT Society
- ◆ Academic Fair runner-up
- ◆ Accelerated Reader Program
- ◆ American Cancer Society Relay for Life
- ◆ Band
- ◆ Career Awareness Day
- ◆ P.R.I.D.E. Program
- ◆ Character Education Program
- ◆ Chorus
- ◆ Superintendent's Essay Award
- ◆ MAP Improvement Wall
- ◆ March of Dimes
- ◆ Miss Rosemary Middle Pageant
- ◆ Parent Workshops
- ◆ Proficient Writers Award
- ◆ Quarterly Academic Awards
- ◆ Quarterly Attendance Awards
- ◆ Recycling Program
- ◆ RMS Geography Bee
- ◆ RMS Spelling Bee
- ◆ Science Fair Participation
- ◆ Low-Country Science Fair Winners
- ◆ Semester Behavior Field Trip

Our School Today

- ◆ The average daily attendance for the 2010-2011 school year was 95.6
- ◆ Rosemary Middle School is accredited by the Southern Association of Colleges and Schools.
- ◆ Enrollment is 495.

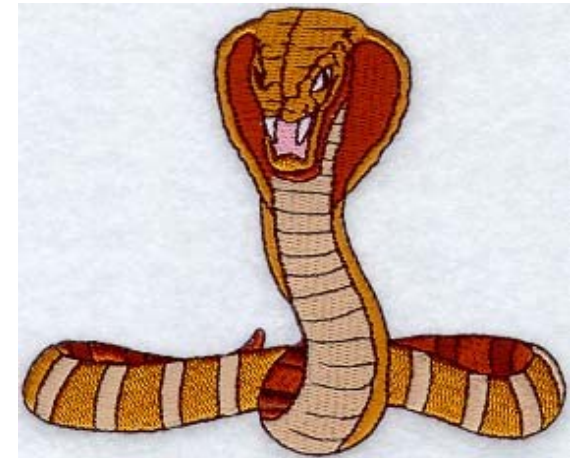
School Report Card

Absolute Rating..... Average
Improvement Rating.....Average

Title One Initiatives

Technology Purchases (Lap-Top Cart)
Additional ELA teacher in 6th grade
Additional Math teacher in 6th grade
Partial funding Curriculum Coordinator
Partial funding classroom libraries for each
ELA teacher at Rosemary Middle School
Parent Pamphlets
Funding for Math pullout services

Rosemary Middle School



***12804 County Line Road
Andrews, SC 29510
843-264-9780 (phone)
843-264-9787 (fax)***

*Michael Caviris, Principal
Reggie Thompson Asst. Principal
Cameron Worten, Curriculum Specialist*

Mission Statement

The mission of Rosemary Middle School is to create a safe, innovative learning environment which will enable each student to achieve academic, social, emotional, and physical potential to become a responsible, productive citizen and lifelong learner.

Our Beliefs

We believe...

- ◆ the primary focus of administrators, teachers, and staff is to improve student achievement.
- ◆ active involvement of parents, teachers, students, and community is essential to education.
- ◆ every person has the right to a safe school environment conducive to learning.
- ◆ students are responsible for their own behavior and learning.
- ◆ technology is an essential element in learning.
- ◆ historical and cultural diversity aid in the growth and development of students.
- ◆ in equity in quality education for all students.
- ◆ a challenging, integrated curriculum is a gateway to meeting high academic standards.



Evaluation of School Renewal Plan Goals for 2010-2011

Curriculum

- ◆ Map and PASS results were analyzed to identify strengths and to target weaknesses of the curriculum.
- ◆ All 6th grade students received over 100 minutes of instruction in each area.
- ◆ Implemented balance literacy in the 6th grade.
- ◆ Benchmark Data was examined to assess needs and strengths. .

School Environment

- ◆ Student discipline referral were reduced by 10%.
- ◆ Additional computers were purchased.
- ◆ Additional Promethean Boards were purchased.
- ◆ Swipe access for all employees

Home School Connection

- ◆ Career Day and Job Shadowing
- ◆ Curriculum night and Science Fair
- ◆ PTSA Fundraisers
- ◆ Monthly updates made to the schools website.
- ◆ Choral and Band and concerts throughout the year.

Goals for 2011-2012

Curriculum

- ◆ Common Assessments used to clearly define student needs. .
- ◆ PLT process implemented and used to strengthen instruction and increase rigor.
- ◆ Bench-mark data used for instructional purposes
- ◆ Faculty will continue receive training in non-fiction writing and essay writing.
- ◆ On-going staff development focusing on technology
- ◆ Infusion of Professional Learning Teams and analysis of student work.

School Environment

- ◆ Promethean boards, computers, and projectors will be purchased to expand technological capabilities.
- ◆ Emergency procedures will continue to be updated and practiced.
- ◆ School will increase number of parents participating in extra-curricular events
- ◆ Student incentive program to increase positive behavior. Cobra PRIDE program..
- ◆ ***Home School Connection***
- ◆ Parent information programs will continue to educate community.
- ◆ Parent-Teacher relations will increase by providing interactive meetings.