

National Board Certified
Teachers

Rhonda Britton
Tricia Hughes
Mary Syler

Teacher of the Year

Margaret Fairbanks

***Programs/Leadership
Opportunities***

- ◆ ABBIT Society
- ◆ Academic Fair Participant
- ◆ Reading Workshop in 6th grade
- ◆ American Cancer Society Relay for Life
- ◆ Band
- ◆ Career Awareness Day
- ◆ Character Education Program
- ◆ Chorus
- ◆ Superintendent's Art Award
- ◆ March of Dimes
- ◆ Parent Workshops
- ◆ Quarterly Academic Awards
- ◆ Recycling Program
- ◆ Semester Behavior Field Trip
- ◆ FBLA Club Competition
- ◆ STEM Enrichment
- ◆ BETA Club
- ◆ Student Council
- ◆ Girls & Boys Mentor Groups

Our School Today

- ◆ The average daily attendance for the 2021-2022 school year was 94.0
- ◆ Enrollment is 369

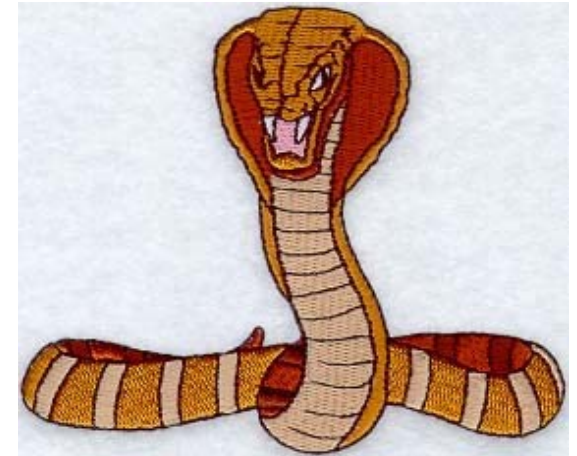
Programs and Events

- Veterans Day Activities
- American Education Week
- Read Across America Week
- Red Ribbon Week
- Career Week
- Monthly Student of the Month Celebrations
- RMS Carnival
- RMS Fall Festival

**Professional Development for
Staff**

- I-leader Professional Development
- SC Council of Teachers of Mathematics Conference
 - NSTA Science Conference
- Weekly School based professional development in Literacy, Math, STEAM, and SC Teaching Standards & Practices
- SC Council for the Social Studies
 - SC AMLE
- Innovative School Summit
 - AMLE

***Rosemary Middle
School***



***12804 County Line Road
Andrews, SC 29510
843-264-9780 (phone)
843-264-9787 (fax)***

LaTanya Goodson, Principal

Sean Berry Asst. Principal

*Rhonda Britton, Instructional
Coach*

Evaluation of School Renewal Plan Goals for 2022-2023

Curriculum

- ◆ I-ready, SC Ready and SC PASS results were analyzed to identify strengths and to target weaknesses of the curriculum.
- ◆ All students receive ELA & Math remediation via Interventionist or Remediation Lab
- ◆ I-ready data was examined to assess needs and strengths.

Home School Connection

- ◆ Career Day and Job Shadowing
- ◆ Curriculum night and Talent Show
 - ◆ Monthly newsletter
- ◆ Daily & Monthly updates made to the school's website and Facebook page.
- ◆ Choral and Band and concerts throughout the year.
- ◆ Teachers communicating with parents weekly via various platforms

Goals for 2022-2023

Curriculum

- ◆ PLT process implemented and used to strengthen instruction and increase rigor.
- ◆ I-ready data used for instructional purposes
- ◆ Faculty will closely monitor student data to guide academic decisions.
- ◆ On-going staff development focusing on standards

School Environment

- ◆ Computerized programs purchased to expand standards capabilities.
- ◆ Emergency procedures will continue to be updated and practiced.
- ◆ School will increase number of parents participating in extra-curricular events
- ◆ Student incentive program to increase positive behavior. Cobra PBIS program.

Home School Connection

- ◆ Parent information programs will continue to educate community.
- ◆ Parent-Teacher relations will increase by providing timely communication and meetings.

Vision

Rosemary Middle School will provide engaging, differentiated instruction and support to ensure all students succeed.

Mission

Students' needs are the focus of all decisions.

Belief

Rosemary Middle School Staff will create a safe and nurturing environment where student's academics, emotional and social development is a top priority.