

School Report Card

- ◆ Adequate Yearly Progress.....No
- ◆ National Board Certified Teachers

Lori Moore

Cameron Worten

Trisha Hughes

Julie Hartley

- ◆ Teacher of the Year
Rhonda Britton

Enrichment

- ◆ ABBIT Society
- ◆ Academic Fair Participant
- ◆ Reading Workshop in 6th grade
- ◆ American Cancer Society Relay for Life
- ◆ Band
- ◆ Career Awareness Day
- ◆ P.R.I.D.E. Program
- ◆ Character Education Program
- ◆ Chorus
- ◆ Superintendent's Essay Award
- ◆ High Progress Literacy
- ◆ March of Dimes
- ◆ Miss Rosemary Middle Pageant
- ◆ Parent Workshops
- ◆ Proficient Writers Award
- ◆ Quarterly Academic Awards
- ◆ Quarterly Attendance Awards
- ◆ Recycling Program
- ◆ RMS Geography Bee State Finalist
Kamden Freeman
- ◆ RMS Spelling Bee
Jordan Casselmen
- ◆ Semester Behavior Field Trip
- ◆ Show Choir
- ◆ Homework center
- ◆ Beta Club Competition

Our School Today

- ◆ The average daily attendance for the 2013-2014 school year was 96.0
- ◆ Rosemary Middle School is accredited by the Southern Association of Colleges and Schools.
- ◆ Enrollment is 479

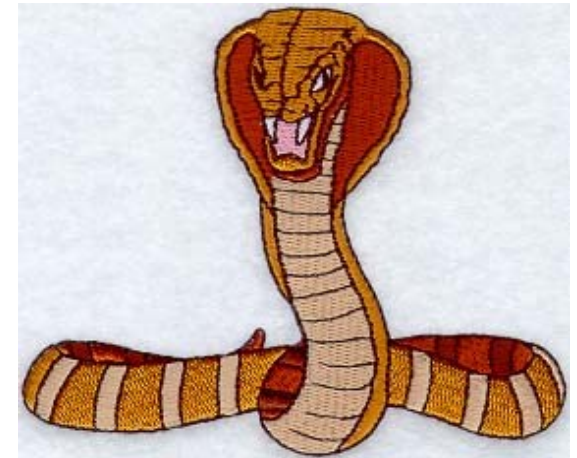
School Report Card

Absolute Rating..... Average
Improvement Rating.....Average
Awarded Palmetto Silver Star
(2011-2012)

Title One Initiatives

Technology Purchases (Lap-Top Cart)
Additional ELA teacher reading enrichment
Additional Math teacher in 6th grade
Partial funding Curriculum Coordinator
Partial funding classroom libraries for each
ELA teacher at Rosemary Middle School
Parent Pamphlets
Funding for Math pullout services
100 minute ELA and Math classes for 6th
graders
Purchase ALEXS Math tutorial
Reading 180 Program 14-15 school year
Math and English pullout provided.

Rosemary Middle School



***12804 County Line Road
Andrews, SC 29510
843-264-9780 (phone)
843-264-9787 (fax)***

*Michael Caviris, Principal
Reggie Thompson Asst. Principal
Latonya Goodson Curriculum Specialist
Cameron Worten, Curriculum Specialist*

Mission Statement

The mission of Rosemary Middle School is to create a safe, innovative learning environment which will enable each student to achieve academic, social, emotional, and physical potential to become a responsible, productive citizen and lifelong learner.

Our Beliefs

We believe...

- ◆ the primary focus of administrators, teachers, and staff is to improve student achievement.
- ◆ active involvement of parents, teachers, students, and community is essential to education.
- ◆ every person has the right to a safe school environment conducive to learning.
- ◆ students are responsible for their own behavior and learning.
- ◆ technology is an essential element in learning.
- ◆ historical and cultural diversity aid in the growth and development of students.
- ◆ in equity in quality education for all students.
- ◆ a challenging, integrated curriculum is a gateway to meeting high academic standards.



Evaluation of School Renewal Plan Goals for 2013-2014

Curriculum

- ◆ Map Benchmark and PASS results were analyzed to identify strengths and to target weaknesses of the curriculum.
- ◆ All 6th grade students received over 100 minutes of instruction in each area.
- ◆ Implemented balance literacy in the 6th grade.
- ◆ Benchmark Data was examined to assess needs and strengths. .

School Environment

- ◆ Student discipline referral were reduced by 10%.
- ◆ Additional computers were purchased.
- ◆ Additional Promethean Boards were purchased.
- ◆ Implemented a Advisor/Advisee program

Home School Connection

- ◆ Career Day and Job Shadowing
- ◆ Curriculum night and Talent Show
- ◆ PTSA Fundraisers
- ◆ Monthly updates made to the schools website.
- ◆ Choral and Band and concerts throughout the year.
- ◆ Creation of parent driven Facebook page.

Goals for 2013-2014

Curriculum

- ◆ Common Assessments used to clearly define student needs. .
- ◆ PLT process implemented and used to strengthen instruction and increase rigor.
- ◆ Bench-mark data used for instructional purposes
- ◆ Faculty will closely monitor student data to guide academic decisions.
- ◆ On-going staff development focusing on technology
- ◆ Infusion of Professional Learning Teams and analysis of student work.

School Environment

- ◆ Promethean boards, computers, and projectors will be purchased to expand technological capabilities.
- ◆ Emergency procedures will continue to be updated and practiced.
- ◆ School will increase number of parents participating in extra-curricular events
- ◆ Student incentive program to increase positive behavior. Cobra PRIDE program..

Home School Connection

- ◆ Parent information programs will continue to educate community.
- ◆ Parent-Teacher relations will increase by providing interactive meetings.