

# Greenville High School Improvement Council (SIC)

## Annual Report to the Community 2011

---

JF Lucas      Principal  
Pam Evans      SIC Chair

Community:

Craig Stine  
Rev. Sam McPhereson

Parent/School Organizations:

Derrick Brown  
Suanne Hall  
Walt Tollison  
Jennifer Yarborough

Students:

Sydney Berry  
Jack Evans  
Dontavius Reeves  
Moriah Wicker

Faculty:

Jennifer Binder  
Christine Burras  
Vicki Clement  
Michael Hoffman  
Dom LaColla  
Aaron Merritt  
Matt Phillips  
Pam Player

# Annual Report to the Community

---

Each SIC is required to write and distribute the annual "Report to the Community" by April 30th of each school year. This report provides us with an excellent opportunity to share Greenville High's successes with the community as we report on the progress made with the school improvement plan.

Throughout the past four years, our school has made continuing progress in the four key areas assessed on the Annual SC School Report Card. These areas include:

- ❑ First-time pass rate on the High School Exit Exam, HSAP, or the number of 10<sup>th</sup> graders who pass all parts of the exam on the first attempt;
  - ❑ Longitudinal pass rate on HSAP, or the number of students who successfully pass all parts of the exam by 12<sup>th</sup> grade;
  - ❑ Pass rate on all End-of-Course Tests, including Algebra 1, Biology 1, English 1, Physical Science, and US History;
  - ❑ On-time Graduation rate, or the number of students who graduate four years after entering high school.
-

# Accomplishments

---

- ❑ Implementation of new magnet courses—Law, Finance, and Business;
  - ❑ Continuation of extended day program for at-risk students;
  - ❑ Benchmark testing provides data for instructional decision-making in 9<sup>th</sup> and 10<sup>th</sup> grade core courses and all EOC classes;
  - ❑ On-going Individual Graduation Plan (IGPs) sessions with 9<sup>th</sup>, 10<sup>th</sup>, and 11<sup>th</sup> grade students;
  - ❑ Freshman Academy common planning provides teachers opportunities for continued collaboration, resulting in the continued decrease of 9<sup>th</sup> grade failures;
  - ❑ Graduate Greenville provides a Graduation Coach for struggling 9<sup>th</sup> grade students;
  - ❑ GHS English teacher named as District Top Ten Teacher for 2010-2011;
  - ❑ Greenville High named as Top 1500 School by *Newsweek* Challenge;
  - ❑ Second-tier course, Digital Electronics, offered as part of Project Lead the Way;
  - ❑ *Challenge Days* held March 2011 for over 450 students and 50 adult facilitators;
  - ❑ 18 students named as Palmetto Fellow Scholarship recipients for 2010-2011;
  - ❑ One student named National Merit Scholarship Program Finalist for 2011;
  - ❑ Over 1000 Renaissance cards distributed to students for academic achievement and GPA improvement;
  - ❑ 23 Varsity sports teams competing in 15 sports in South Carolina AAA.
-

# Enrollment Trends:

School Year	2008-09	2009-10	2010-11
Student Enrollment	1306	1439	1436
Number Eligible for Free and Reduced Lunch	543 free 74 reduced	707 free 49 reduced	710 free 72 reduced
% Free and Reduced Lunch	47%	53%	54.5%

# Freshman Academy Pass Rate

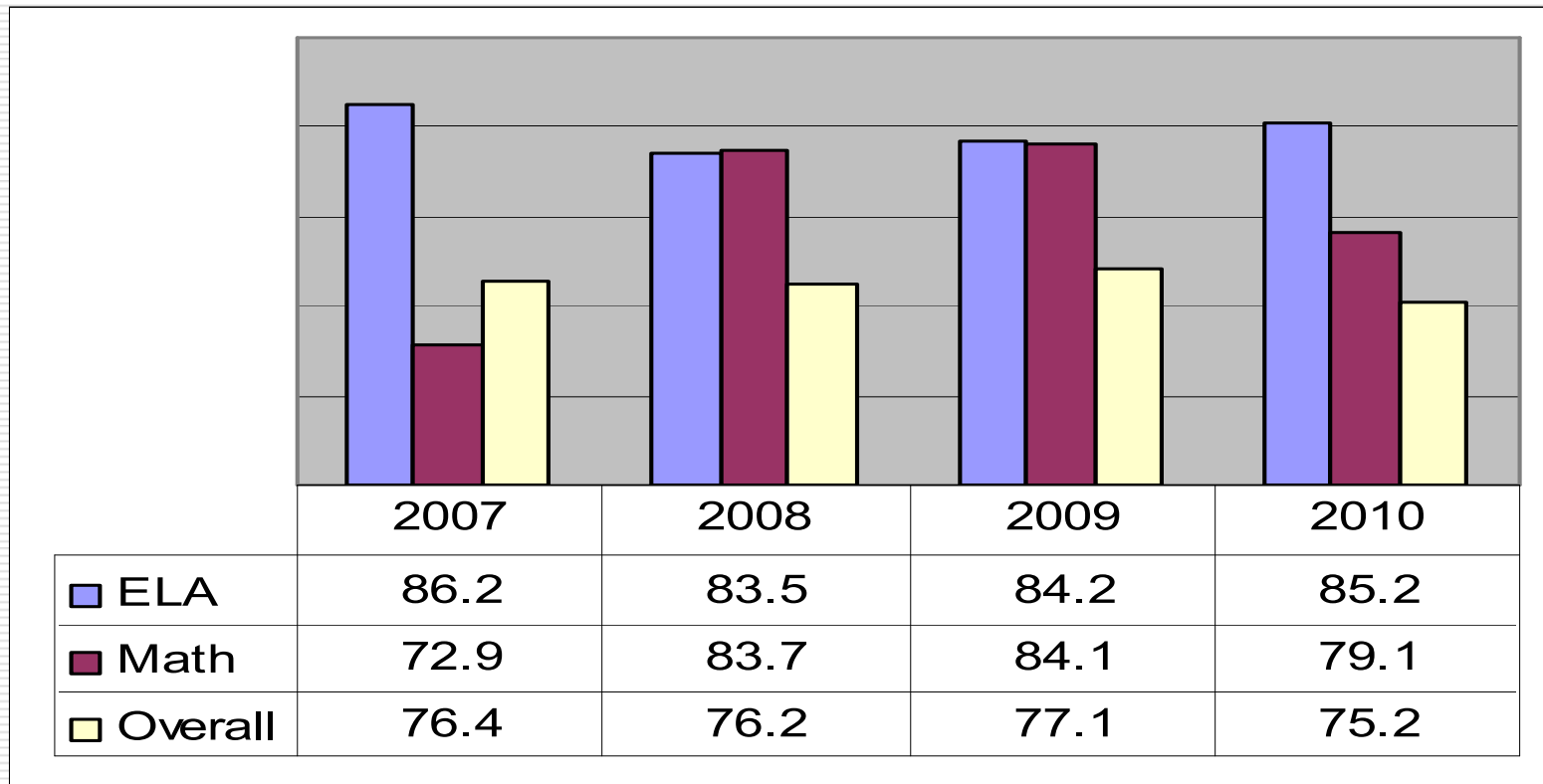
---

School Year	Freshman Pass Rate
2004-2005 (Academy implemented)	83.9%
2005-2006	84.4%
2006-2007	87.2%
2007-2008	88.6%
2008-2009	86.1%
2009-2010	85.4%

---

# High School Assessment Program (HSAP) First-time Pass Rate

---



The high school Exit Exam, HSAP, is taken in the Spring of 10<sup>th</sup> grade. It consists of three parts: a reading and writing component (ELA) and a math component. The first-time pass rate is the number of students who pass (score of 2 or higher) on the first attempt.

# High School Assessment Program (HSAP) Longitudinal Pass Rate

---

2006-07	86.6%
2007-08	86.6%
2008-09	92.1%
2009-2010	92.6%

**Longitudinal pass rate reflects the number of students who pass both parts of HSAP by their senior year (after multiple attempts).**

---

# End of Course Exam Pass Rate

EOC	2007	2008	2009	2010
Algebra 1	63.4%	66.7%	60.5%	68.7%
English 1	54.3%	60.6%	67.2%	72.0%
Physical Science	49.5%	60.8%	69.0%	69.0%
US History	NA	NA	51.0%	57.2%
All Tests	65.8%	62.5%	61.9%**	67.5%***

\*\*Overall pass rate without US History for 2008-09 is 65.6%

\*\*\*Overall pass rate for 2009-2010 includes US History results.



# On-Time Graduation Rate\*

---

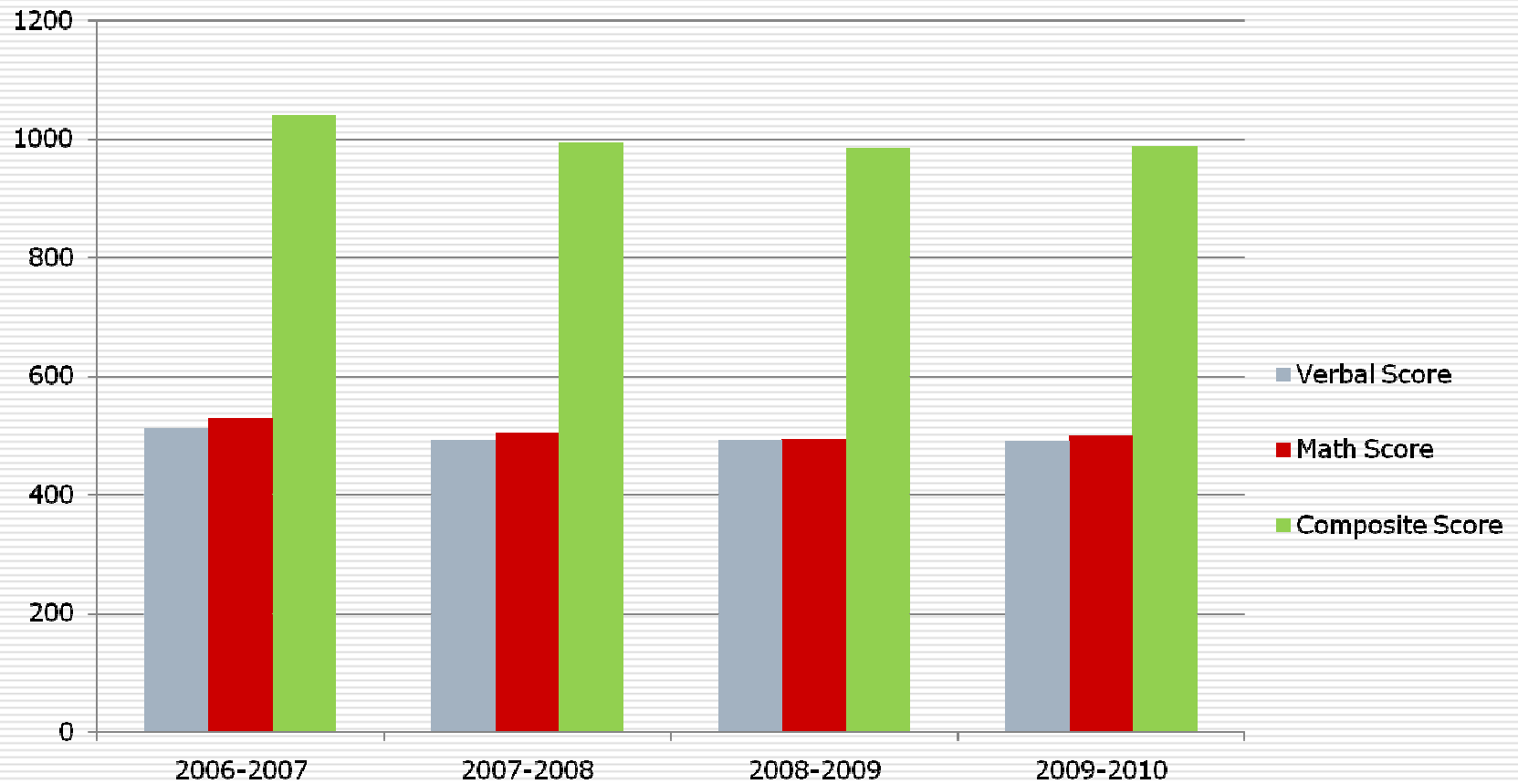
2006- 2007	2007- 2008	2008- 2009	2009- 2010
69.4	71.8	72.0	70.8%

\*On-Time graduation means a student graduates within four years of entering high school.

---

# SAT Trends

---

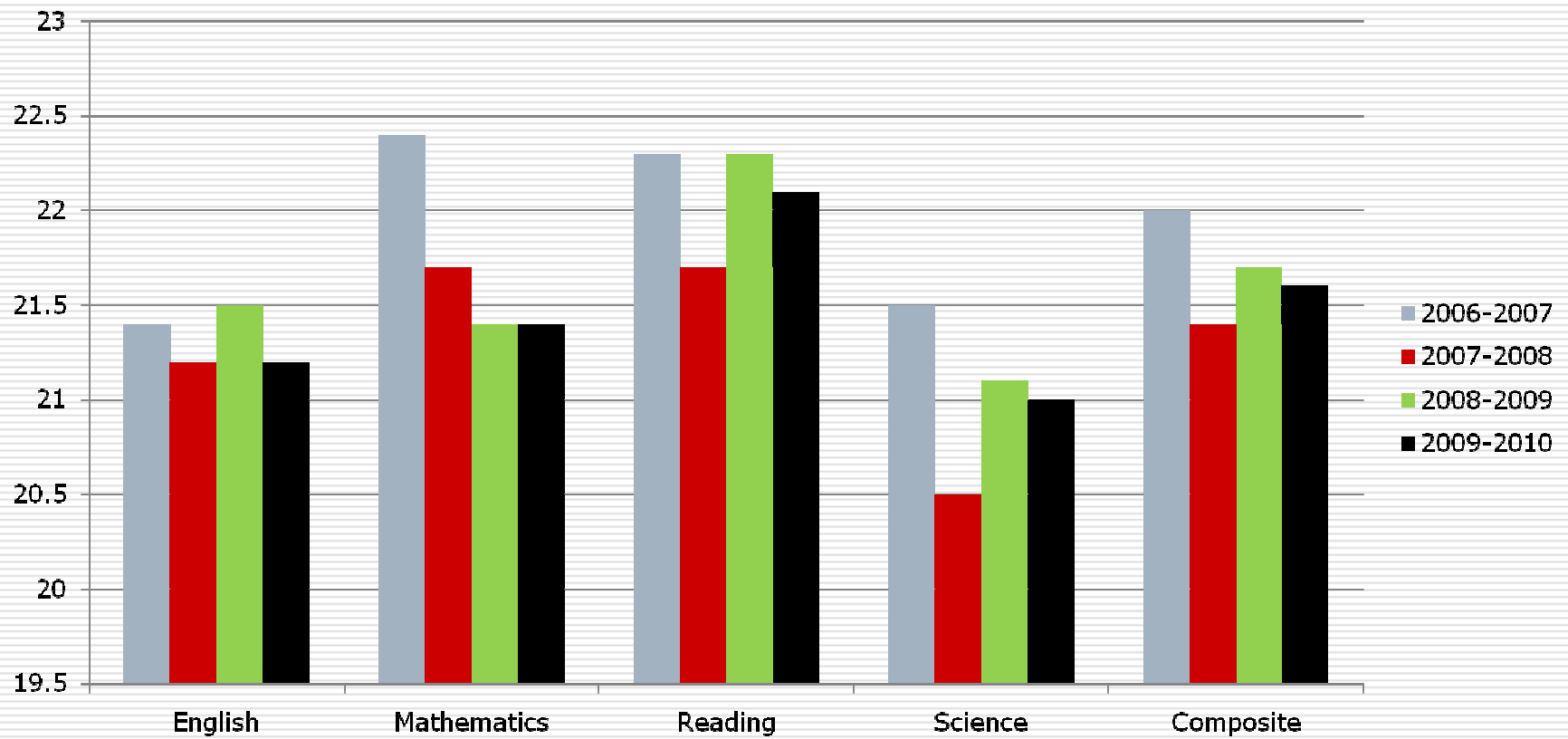


---

**Maximum composite score is 1600 without writing component.**

# ACT Trends

---



---

**Maximum score is 36.0.**

# AP Data Summary

	2006- 2007	2007- 2008	2008- 2009	2009- 2010
<b>Number AP Courses Taken</b>	14	14	15	12
<b>Number AP Exams Taken</b>	383	293	320	405
<b>Number Exams with Score of 3 or Higher</b>	218	155	187	243
<b>Percent Exams with Score of 3 or Higher</b>	57%	53%	58%	60%