



Lugoff Elementary School 2022-2023

School Improvement Council
Annual Report

994 Ridgeway Road
Lugoff, South Carolina 29078

(803) 438 - 8000

(803) 408 - 3970 (fax)

<https://www.kcsdschools.net/les>

School Hours: 7:30 AM—2:30 PM

Dr. Melissa C. Lloyd, Principal



History of Lugoff Elementary



- ★ Built in 1966 & dedicated August 1967
- ★ 1st all electric school in Kershaw County
- ★ 16 acres, built for 600 students grades 5K-5th grade
- ★ 2 classroom buildings and an administrative wing, with offices, library, cafetorium, and a health room.
- ★ Lugoff Elementary was remodeled and expanded in 1984.



- ★ New Lugoff Elementary built in 2017 & dedicated in January 2018
- ★ Increased our square footage from 60, 600 to 92,000.
- ★ Full capacity is 800 students
- ★ 38 classrooms, ranging from 800 to 1200 sq. feet
- ★ Teacher workrooms on each hall, a computer lab, art room, gym and administrative wing.



Our Mission & Beliefs

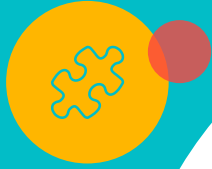
3

~ The mission of Lugoff Elementary School is to develop competent, confident, lifelong learners by creating a safe, child-centered environment where the school and community collaborate to help students attain their maximum potential. ~

We Believe:

- **Elementary education and early intervention are critical to academic success.**
- **All students can learn and will have the opportunity to learn through varied learning strategies.**
- **The school environment will be safe and conducive for learning.**
- **Our school is a community of learners where learning is an active and exciting lifelong process.**
- **Effective learning takes place when students, teachers, parents, and the community work together.**
- **A well-prepared, optimistic, and enthusiastic staff is vital to a positive learning environment.**
- **Everyone will be valued and treated with respect.**

Cultivating Relationships





Class Dojo: Our school-wide positive behavior program connects teachers with students and parents to build amazing classroom communities.

Notes & Quotes: School-wide newsletter

PBIS (Positive Behavior Intervention and Support): PBIS is a school-wide behavior management plan based on positive reinforcement. Each nine weeks, students who earned a set percentage of positive Dojos are invited to a celebration. Celebrations are funded by fundraisers. Celebrations include special field trips and events, extra recess, and a treat.





Blackboard Connect: An automated, school-wide communication tool used to provide information to families.

PTO: (Parent Teacher Organization) Supports the mission of Lugoff Elementary School through volunteerism and financial support to enhance the teacher and student experiences.

Family Literacy & Math Nights: Literacy and math resources provided and modeled for families to support student learning.

Field Day: School-wide physical activity games and competitions that promote team-work and sportsmanship.





Information Access:

School Website: <https://www.kcsdschools.net/Domain/16>

Facebook: <https://www.facebook.com/kcsd.les>

Parent Portal: <https://kcsd.powerschool.com/public/home.html>

Twitter: <https://twitter.com/lugoffelem>

Peachjar: <https://app.peachjar.com/flyers/all/schools/35857>



“All Because of Children” Achieving Excellence



- Beta Club: Hygiene Products for Nursing home, Help the Homeless, Kershaw County Special Olympics, Animal Shelter Food Drive
- Camden Junior Welfare League Grant
- One School, One Book Club
- Student Body Initiated and Lead Spirit Days
- Career Day
- DARE
- Virtual, In House and Off Campus Field Trips
- WLES Morning Show
- School-wide Character Education Program (Character Counts)
- 5210 Healthy Generations School Winner
- Mentor Program (M&M)
- United Way Student Campaign
- STEM Lab
- Grade level plays
- Chorus
- Grandparents Day Parade
- Family Book Fair Nights
- Booster Fun Run





LES Teacher of the Year

Mrs. Ashley Bengé

First Grade Teacher



Faculty and Staff Credentials



**Total Years
in Education:
733**

Bachelor's
Degrees

13

Master's
Degrees

21

Master's
+30

5

National
Board
Certification

4

Doctorate

2

Pursuing
Degrees

4



Building World Class Skills



Guided Math: Students engage through hands-on centers and cooperative learning exploration to produce long term mastery of concepts and then apply skills to understand math concepts in a variety of methods. Guided Math combines many teaching styles: large group teaching, small leveled group instruction, and individual practice. ¹¹

- **Reader's Workshop:** A school-wide reading framework designed to engage students through various literacy activities to promote reading growth and instill a love of reading. The workshop begins with a short, whole group mini-lesson where teachers teach reading strategies or introduce a new skill. Then students will participate in literacy activities, such as, read to self, read to someone, or technology learning paths while the teacher works with guided reading groups. During guided reading groups, the teacher teaches reading strategies or skills using leveled text on that particular group's level.
- **Morning Meetings:** Classroom community is built through daily routine meetings that create an environment of respect, trust, academic growth, and positive behaviors.
- **MTSS-Multi-Tiered System of Supports:** A framework that many schools use to provide targeted support to struggling students, as well as students working above grade level. It focuses on the "whole child". MTSS supports academic growth and achievement, but also recognizes the behavior, social, and emotional needs of learners.
- **RTI (Response to Intervention):** A multi-tiered approach to the early identification and support of students with learning and behavior needs.
- **Math Intervention** - A program working with struggling students primarily by providing high quality mathematics instruction to individual students and small groups.



Building World Class Skills



• **Technology Engagement:** Students are provided opportunities to participate in on-line learning activities with programs such as Reflex, Math Seeds, Reading Eggs, Study Island, Quaver, Kahoot, Quizizz, Quizlet Live, The Big E (Exact Path).

• **Reading Intervention:** A program that works extensively with struggling readers primarily in grades K - 2 in order to help them improve specific reading skills such as letter-naming, initial sounds, phoneme segmentation, and comprehension strategies.

• **Reading A to Z:** An on-line learning website with more than 2,500 downloadable books for a variety of reading abilities that includes teaching and learning materials which promote reading fluency and comprehension.

• **SEAGUL:** Special Educational Activities Geared for Unique Learning (SEAGUL) is Kershaw County's gifted and talented program. The program serves third through eighth grades and provides experiences which are based on the different developmental needs of the gifted and talented student. Kindergarten through second grade students are also attending this year to introduce rigor and "brain boosters".

• **Project Read** is a complete research-based language arts program which includes instructional materials for [phonics](#), [reading comprehension](#), and [writing](#). This curriculum honors diverse learning profiles and provides lessons built on direct concept teaching, targeted multisensory strategies, and higher-level thinking skills.



Who We Are



This 2023 School Summary Report was brought to you by:

Our School Improvement Council: An action committee consisting of parents, community leaders and teachers striving to improve our school.

Meets: One Tuesday of each month at various times to accommodate work schedules

All parents are invited to attend.

SIC Members

Hayward Myers, Melody Johnson, Carey Fuller, Allison Hemingway, Lynda Watson

Administrators: Melissa Lloyd, Adele Dixon

School Board Representatives

Todd McDonald

