



EASTSIDE SUMMARY REPORT

2022-23

103 Old Colony Road

Clinton, SC 29325

864-833-0827

864-833-0828 Fax

<http://ees.lcsd56.org/>

Laurens County School District 56
Dr. David O'Shields, Superintendent
Mrs. Tanya Wilson, Principal

VISION LAURENS COUNTRY SCHOOL DISTRICT 56

Where students become ethical and productive citizens - achieving excellence, embracing innovation, and forging new traditions.

MISSION STATEMENT

Our mission is to provide a world class education driven by integrity, teamwork, perseverance through a culture of continuous improvement.

DISTRICT-WIDE EXPECTATIONS

All students will graduate college and career ready, prepared for life.

Laurens County School District 56 will:

Engage all stakeholders in the support of quality education and continuous improvement.

Empower students to use technology resources to support learning.

Educate in an environment that promotes creativity, collaboration, critical thinking, communication, and character.

Elevate the academic performance of each student to ensure readiness for the next level.

GOALS FOR 2022-23

Curriculum

Continue the implementation of the Growth Mindset

Continue the implementation of LETRS

Full Implementation of 1:1 technology

Embedded professional development during the school day focused on MAP data in reading and math

Profile of the SC Graduate

Analysis and implementation of SC College and Career Ready Standards in ELA, Math, Science and Social Studies

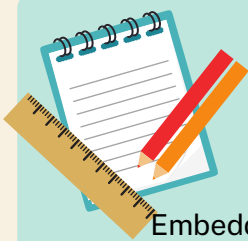
Increase teacher knowledge of instructional technology

Full time interventionists

Full implementation of Letterland 5K-2nd Grade

Author Visit - Eric Litwin

Presentation of "One Voice" from Jeremiah Dew to celebrate Black History Month



School Environment

End of Quarter Student Celebrations

Classroom, small group, individual counseling

Positive Behavior Intervention Supports

Implementation of Second Step social emotional learning curriculum

Standard Response Protocol - Safety Standards

Continue the implementation of Morning Meeting

Implementation of Leader In Me



Home-School Connection

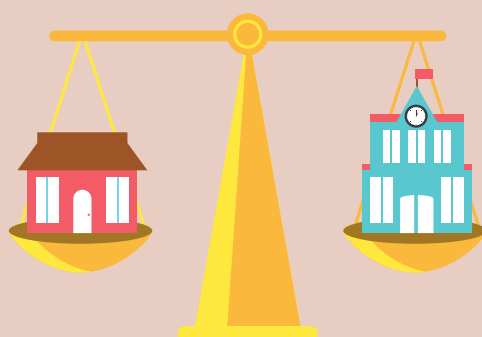
Family Nights

Increased communication through social media

Supports partnership with Presbyterian College and area churches

Partnership with Clemson Extension for After School Program

Joe R. Adair Outdoor Education Center



OPPORTUNITIES

Celebrations for academic achievement
After School Program
After School Reading Program for 3rd and 4th grade
Balanced Literacy - R2S
College and Career Awareness
Second Step SEL Curriculum
Partnerships with Presbyterian College
District-Wide Professional Development



ESL Support
Family Nights
Field Trips
Gifted and Talented Programs - Academic and Artistic
Daily News Show

Related Arts offered weekly-PE, Music, Art, Computer, and Library

Book Vending Machine as incentives
State Museum Grant - 4th Grade
Guidance

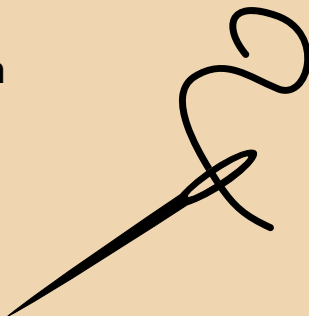
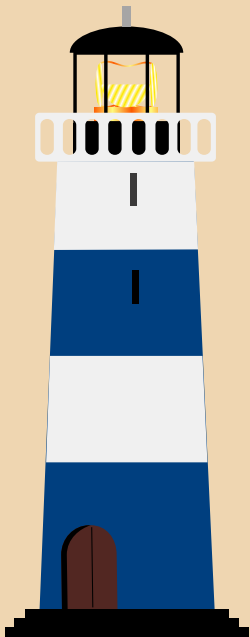
School-Based Mental Health
Michelin STEM Competition
Project Based Learning
Red Ribbon Celebrations
Safety Drill Protocols
School Check-In
SIC

Snack Pack Program
Supplemental Support Services
Title 1- Class size reduction

Title 1- small group reading and math interventions

Community Eligible Program
Junior Beta Club
All Star Reading Challenge
Unified Partners

Leader In Me & Student Lighthouse Team
Clubs - Morning and Schoolwide



OUR SCHOOL TODAY

The average daily attendance rate -
96.2%

Enrollment is
473
students



Eastside Elementary School is accredited by AdvancED

CELEBRATIONS

Service projects completed by the Junior Beta Club Members

Behavior Intervention Team

Lighthouse Awards - students and staff

Monthly Soar Challenges Schoolwide

Schoolwide Morning Meeting every Monday

Student News Show

Best Costume and Highest Individual fundraising - Special Olympics



SCHOOL IMPROVEMENT COUNCIL

Becca Wham, Chairperson
Tanya Wilson, Principal
Anna Miller, Parent
Drew Peterson, Parent
Lacresha Dowdy, Parent
Kay Goodson, Teacher
Elizabeth Myers, Teacher
Patsy Simmons, Community Member
Dr. Patricia Jones, Community Member