



# SPRINGDALE ELEMENTARY SCHOOL SIC REPORT TO THE PARENTS

2023-2024



## STAFF

**We currently serve over 400 students in:**

- 1 - 4K Preschool
- 3- 5K Classrooms
- 3- 1st Grade Classes
- 3- 2nd Grade Classes
- 3- 3rd Grade Classes
- 3- 4th Grade Classes
- 3- 5th Grade Classes
- 2- ID Mild Self-Contained Classes

**To support our students, we have:**

- 2 Administrators
- 1 Literacy Coach
- 1 Interventionist
- 3 Assistant Interventionists
- 1 Resource Teacher
- 1 Speech Language Pathologist
- 4 Special Area Teachers (Art, Music, PE, & Project Lead the Way)
- 1 School Media Specialist
- 1 School Counselor
- 1 School Nurse
- 1 School Resource Officer
- We also have:**
- 1 School Psychologist
- 1 Social Worker
- 1 ESOL Teacher

## SPRINGDALE'S HISTORY



Springdale Elementary is nestled in the heart of the town of Springdale, located in Lexington County, for over 50 years. Springdale Elementary is one of six elementary schools in Lexington School District Two. The doors of Springdale Elementary opened in 1966. Our newly renovated building



## Vision Statement (Where We Want To Be)

At Springdale Elementary, our vision is to foster self-directed, critical thinkers through innovative and intentional instruction.

## Mission Statement (What We Do)

In partnership with our community, Springdale Elementary celebrates a positive learning environment to support the whole child in becoming a life-long learner and global citizen.



## THE PURPOSE OF THE REPORT TO THE PARENTS

Our School Improvement Council reviews our goals and achievements in order to report progress to our faculty, families, and community.

**Principal-** Annette Ariail  
aariail@lex2.org

**Assistant Principal-** Melanie Yoder  
myoder@lex2.org

361 Wattling Road  
West Columbia, SC 29170  
(803) 739-4175



"Where children and learning come first"

# School Improvement Council Members

**Chair:** Jessica Dorn

**Vice Chair:** Gina Krantz

**Secretary:** Megan Jaramillo

Emmylou Todd

Michele Tynes

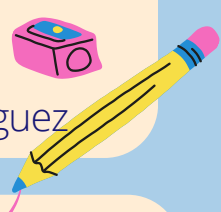
Britney Bundrick

Annette Ariail

Melanie Yoder

Lynn Nutter

Officer Rodriguez



## Springdale's Programs & Outreach

### Academics

- Gifted & Talented Program (LAUNCH)
- Student Goal Setting
- 1:1 Student Technology
- STAR Assessments
- Professional Learning Teams (Data Meets)
- Project Lead the Way Awards Day (each 9 weeks)
- 5th Grade Graduation Reading Celebrations
- Brain Boosters
- Faculty & Team Lead PLCs

### Student Supports

- MLL Program
- Interventionists
- Literacy
- Countdown to Kindergarten
- Mentoring Program- PODs
- Awards Day (each 9 weeks)
- Lex 2.5
- Character Education & Awards
- Summer Reading Camp
- Student School Supplies
- Friday Snack Packs
- Families Helping Families

### Student Enrichment

- Chorus
- Literacy Night & Week
- National Beta Club
- Art Gallery Walk Through
- College/Career Events
- STEAM Night
- Books & Breakfast (4K)
- Dolphins Committed to Character
- Books Over Breakfast

### Community Involvement

- Springdale Baptist
- Afterschool Bible Club
- PTO
- Little Free Library
- Boys & Girls Club
- Springdale Police Depart.
- Clemson Gardening Grant
- Veteran's Day
- Interns from USC & CC
- Teacher Cadets and Athletes from Airport High
- Souper Bowl of Caring
- Socks for Seniors

### Health & Safety

- Red Ribbon Week
- D.A.R.E. Program
- Lexington Mental Health
- Boosterthon
- Anti-Bullying Initiatives
- Operation Get Smart
- Healthy Learners

### PTO-

- Teacher Mini Grants
- Monthly Teacher Appreciation
- Fall Festival
- Spirit Nights
- Student Treats
- Clothing Closet
- Splash Store & Popcorn Fridays



## School Renewal Plan Goals

The percent of students in grades 3-5 scoring at or above the Meets Expectations level on the SC Ready Math, ELA, & Science will increase by 2% in each area listed below in the "Current" table.

Grade Level	Math 22-23	Math 23-24	ELA 22-23	ELA 23-24	Science 22-23	Science 23-24
3rd	62%	58.1%	48%	58.1%		
4th	66.7%	67.9%	61.9%	54.7%	65.1%	52.8%
5th	41.9%	65%	51.6%	70%		

Averages	At or Above Meets Expectations					
	Math 22-23	Math 23-24	ELA 22-23	ELA 23-24	Science 22-23	Science 23-24
Springdale	54.3%	61.1%	56.6%	63.4%	65.1%	52.8%
State	46.6%	53.9%	38.9%	40.9%	46%	45.1%

The percentage of teachers, students, and parents that agree or strongly agree they are satisfied with the social and physical environment at Springdale will increase by at least 2%.

Results	Students 22-23	Students 23-24	Teachers 22-23	Teachers 23-24	Parents 22-23	Parents 23-24
Percent satisfied with social and physical environment	83%	91.3%	76%	84.6%	83.6%	100%

The Springdale Elementary School Improvement Council works collaboratively with the school to develop and implement a five-year school improvement plan, monitors and evaluates success in reaching the plan's goals and objectives, and writes an annual report to parents about the progress of the plan. The Council also assists the Principal in writing the narrative for the School State Report Card and helps the school accomplish its mission. Nominations for the School Improvement Council are held each school year.

