

## **Mission Statement**

Whitmire Community School, while providing a safe and nurturing environment and collaborating with families and the community, will prepare all of our students through academics, athletics, and extra-curricular experiences to be productive, responsible, global citizens who engage in lifelong learning.

### 2011 Report Card Absolute Ratings

Elementary—Average

Middle—Average

High—Average



2597 Hwy 66

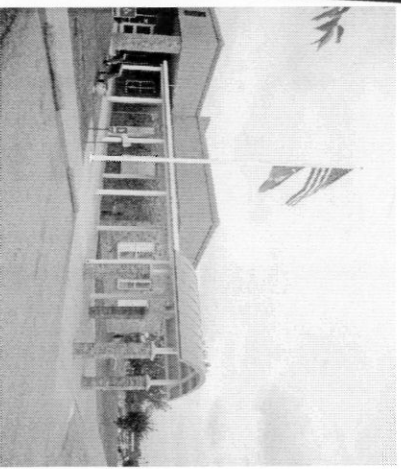
Whitmire, SC 29178

Phone: 803-694-2320

Fax: 803-694-3835

[www.newberry.k12.sc.us](http://www.newberry.k12.sc.us)

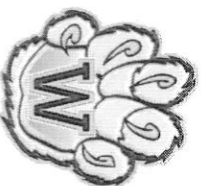
## **Whitmire Community School 2010-2011 School Summary Report**



***Wolverines***

***Committed to***

***Success***



Whitmire Community School is a PreK-12 school located in the midst of the Sumter National Forest of northern Newberry County. Whitmire is commonly known to the state as the Pearl of the Piedmont. In 2003, the School District of Newberry decided to combine Whitmire Elementary (PK-6) and Whitmire High (7-12) to form Whitmire Community School. WCS is accredited according to the Advanced Standards for Quality, formerly known as Southern Association of Colleges and Schools (SACS). WCS is an SREB/SDE High Schools That Work site and has also been recognized by the Palmetto Gold and Silver Awards Program.

Our classroom instruction is based on South Carolina curriculum standards with our focal point being reading and writing instruction. Reading and writing instruction is integrated across all content areas and the responsibility is equally shared by all stakeholders. Teachers across all content areas recognize "Writers of the Month" each quarter at success assemblies. Such programs and initiatives as Family Message Journals, the Wee Delivery Postal System, author visits, Reading with the Wolverines, Reading with the Gamecocks, Read Across America Week, and Teen Read Week provide authentic writing and reading opportunities throughout our school and community.

We continued to implement the Measure of Academic Progress (MAP) assessment program for grades 1 through 10 to measure student growth in Reading, Language Usage, and Mathematics to identify each student's strengths and weaknesses to make instructional decisions. Our Leadership Team will analyze data and have meetings with grade-level teams and content-area teachers concerning student performance on MAP, PASS, HSAP, SAT, ACT, Odyssey, A+ Software, EOC, Dornine, and classroom assessment to establish goals and objectives for ongoing school improvement. A focus for professional growth continued to be creating assessments that are on target with state standards. A daily enrichment period was scheduled for grades 3-8 along with ELA/Math Lab classes for 9-12 students.

WCS continued to take advantage of the available technology such as Smartboards to integrate technology into daily instruction. Teacher shared with their peers a variety of instructional and technology strategies and best practices. Staff members are required to meet technology requirements for professional development and recertification.

We will continue to promote our unique PK-12 setting, use it to the advantage of student achievement, and work toward our mission of providing a safe, nurturing environment and collaborating with families and the community, to prepare all students to be Wolverines Committed to Success.

### INSTRUCTIONAL PROGRAMS & INITIATIVES

Digital Laptop Program, Terrific Kid Lunches, Service Learning, Dental Presentations, FOSS Hands-on Science Kits, Family Message Journals, Reading Intervention, HSTW, 4-Year old program, Enrichment Classes for Grades 3-8, Read with the Wolverines, GT, Book Parade, Career Fair, Job Shadowing, Fall Fitness Challenge, Success Assemblies, Academic Team, Talent Show, PAW (Advisor/Advisee), Afterschool Program, Reading with the Gamecocks

### TEST DATA

GRADE	WRITING	PASS			
		ELA	MATH	SCIENCE	SOCIAL STUDIES
3	NA	68%	66%	30%	74%
4	NA	67%	75%	58%	61%
5	62%	62%	59%	76%	47%
6	NA	48%	56%	40%	70%
7	NA	51%	69%	71%	47%
8	52%	53%	70%	64%	56%

### HSAP

ELA	MATH	ALL SUBTESTS
82%	62%	62%

Data represents percentages of students meeting standard on PASS and HSAP

- Faculty and staff received the following Professional Development: SC Reading Conference, Education Business Summit, Teacher Toolbox, Teaching of Children of Poverty, WOW, SC Mentor Training, FOSS Kit Training, On-Target Assessments, Smartboards
- Paige Cromer & Barry Morris were elected Teachers of the Year and Tarsha Caldwell was elected Support Staff of the Year
- Barry Morris was named District Teacher of the Year
- Lavonne Brock was named Newberry County Distinguished Reading Teacher
- Jr. Beta Club—3rd Place in State Color Photography and Sr. Beta Club—2nd Place in State Scrapbook Competition
- Royal Regiment Marching Band—5th in Upper State Championship and 5th Place in the State Championships.
- Wintrop Band Clinic—Alana Pitts and Christopher Williams
- USC Band Clinic—Ian Eismore, Kylin Hunter, and Christopher Williams
- WCS Concert Band—Excellent Rating at the Southern Star Music Festival in Atlanta, GA
- All Region: Football—Seth Shouse; Volleyball—Crystal Wallace; Tennis—Alex Cromer; Wrestling—Devin Armstrong; Basketball—Mikaela Malpass and Tracey Ruff; Baseball—Jonathan Stevens; Softball—Alex Cromer and Mikaela Malpass
- Academic All State and All Region: Daniel Brock, Alex Cromer, Victoria Jenkins, Caleb Noter, Crystal Wallace, Ethan Boulware, Andrew Cromer, Ian Eismore, Kylin Hunter, Mikaela Malpass, Dakota Miller, Thomas Miller, Alana Pitts, Seth Shouse, Jonathan Stevens, Rondera Linder, Alana Pressley, Jared Wicker