

## Recognitions

- 2012-13 Palmetto Gold Award
- SDE Designated Title I Reward School for Performance - Among the Highest Performing Title I Schools in a Given Year.
- 2011-12 Palmetto Gold and Silver Awards
- 2008, 2009, 2010, 2011, 2012 Winner of Safe Kids Upstate Safe School Award
- 2010 Red Carpet School Winner
- National Board Certified Teachers: Jan Ledbetter, Kay McKinney, Anica Owen, Nicole Richey, Melissa Wilbanks
- Teacher of the Year - Michael Gilstrap
- West End & SDPC Support Person of the Year - Kela Simpson

## School Report Card Rating

Report Card Grade . . . . . A  
 Absolute Rating. . . . . Excellent  
 Improvement Rating . . . . . Excellent

## School Improvement Council Members

David Waddington, Chairman  
 Heather Kelley  
 Philip McAlister  
 Rosa Rivera  
 Joy Ellenburg  
 Debra Harris

## School History

West End School was established as a separate unit of the Easley Public Schools in 1922. In 1929, the wooden building was replaced with a two-story brick structure which was used until the present school, located at the intersection of Highways 8 and 135, opened in the fall of 1985. A new wing was added in 2004. The present enrollment is 726 students in kindergarten (K4 and K5) through grade 5. West End personnel includes 2 administrators, 54 certified staff members, and 32 support staff members.

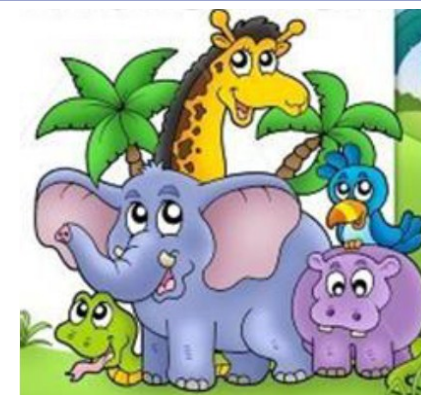
## Primary Map/MAP Test Results

Average RIT Score

Kindergarten	Math	Reading
West End Avg. Fall 11	131.7	133.3
District Avg. Fall 11	134.8	136.5
West End Avg. Spring 12	163.1	161.5
District Avg. Spring 12	162.9	159.9
Grade 1	Math	Reading
West End Avg. Fall 11	166.2	171.0
District Avg. Fall 11	164.4	168.5
West End Avg. Winter 12	178.1	175.6
District Avg. Winter 12	176.1	173.0
West End Avg. Spring 12	186.1	184.2
District Avg. Spring 12	182.7	180.3
Grade 2	Math	Reading
West End Avg. Fall 11	180.7	177.5
District Avg. Fall 11	179.8	177.2
West End Avg. Winter 12	189.6	187.5
District Avg. Winter 12	187.8	186.4
West End Avg. Spring 12	197.6	193.8
District Avg. Spring 12	194.7	193.1
Grade 3	Math	Reading
West End Avg. Fall 11	195.0	191.8
District Avg. Fall 11	193.7	193.4
West End Avg. Winter 12	201.2	199.9
District Avg. Winter 12	200.7	199.5
West End Avg. Spring 12	209.2	207.9
District Avg. Spring 12	208.2	204.9
Grade 4	Math	Reading
West End Avg. Fall 11	205.9	204.7
District Avg. Fall 11	205.6	204.0
West End Avg. Winter 12	211.6	206.7
District Avg. Winter 12	211.3	208.0
West End Avg. Spring 12	220.3	212.0
District Avg. Spring 12	217.7	211.7
Grade 5	Math	Reading
West End Avg. Fall 11	212.9	211.2
District Avg. Fall 11	215.6	211.7
West End Avg. Winter 12	217.3	211.7
District Avg. Winter 12	219.9	214.0
West End Avg. Spring 12	222.0	217.1
District Avg. Spring 12	227.1	217.7

# West End Elementary School

## Report to Parents 2012~13



*Learning Today,  
Leading Tomorrow*

314 Pelzer Highway  
 Easley, SC 29642

864-397-2500

School District of Pickens County  
[wes.pickens.k12.sc.us](http://wes.pickens.k12.sc.us)

Angie Rodgers, Principal  
 Melissa Wilbanks, Assistant Principal  
 Tami Finley, Instructional Coach

## Introduction

This report is provided to parents in compliance with the Education Finance Act (EFA) of 1977, the Education Improvement Act (EIA) of 1984, and the Elementary and Secondary Academic Act (ACT 135) of 1993. It presents information about school accomplishments in the 2011-12 school year and updates on the 2012-13 goals.

## Vision Statement

WE (West End), in cooperation with our community, will educate and mentor each child by creating a safe, stimulating, and challenging educational environment in order to provide a foundation that will empower students to reach their greatest potential and become independent, responsible, and contributing members of society.

## Mission Statement

WE **STRIVE** for Excellence

- S: **Student-centered curriculum** that is active, challenging, rigorous, and engaging for ALL students and prepares them for a successful future
- T: **Technology-rich opportunities** that provide students with real-world experiences, skills, and knowledge
- R: **Respectful environment** where positive character traits are exhibited, everyone is valued and all are treated with dignity, kindness, and fairness
- I: **Independent learners** who set goals and plan for a successful future
- V: **Vibrant learning community** where students feel safe, comfortable, and eager to take initiative and responsibility for their own learning
- E: **Effective use of data** that drives instruction and yields academic **EXCELLENCE**

## Strategic Plan Goals

We will create a standards-based curriculum designed to meet the needs of each student.

We will build a safe and inviting school climate.

We will encourage parent and community participation in the overall program at West End.

## Performance Objectives

During the 2013 PASS administration: All students will demonstrate adequate yearly growth to increase the school mean to a minimum of 640 in all subject areas. Additionally, all disabled students will show growth of a minimum of 9 points.

By June 2013, 90% of students in each grade (K, 1, and 2) will read at or above the following DRA Levels: Kindergarten - Level 4; 1st Grade - Level 16; 2nd Grade - Level 28 and students will show a minimum of one year's growth.

## What We Believe

- Children are our first priority.
- All children can reach their potential.
- All children have a right to learn in a safe, caring environment.
- Learning is a life-long process.
- All children can learn and be responsible.
- Diversity promotes understanding and acceptance of others.
- Children, parents, and teachers are partners in education.

## PROGRESS TOWARD GOALS

- On the 2012 School Report Card, West End scored an overall grade of an "A," maintained its Excellent absolute rating, and improved its growth rating from Good to Excellent.
- West End Elementary continues as a Title I School-Wide Model School. West End's Title I Plan includes instructional activities (including afterschool tutoring) and materials and professional development opportunities for teachers that address strengths/weaknesses identified in the school's needs assessment.
- Teachers have begun the transition to Common Core State Standards and are participating in professional development to facilitate Common Core implementation.
- Data from teacher assessments, PASS, MAP, Primary MAP, the district kindergarten assessment, DIAL III, and DRA2 was analyzed to identify strengths and to target weaknesses of the curriculum and to plan differentiated instructional activities to better meet each student's needs.
- Students participated in a character education program and service learning projects.
- A reading buddy program made up of parent and community volunteers assisted struggling readers.
- At-risk male and female students participated in a mentoring programs (ROCKS and ROPES).
- Educational opportunities for parents have been held to provide parents with subject area information to help them as they assist their children.
- Student artwork was displayed in local art shows. Students participated in local and state musical and choral events.
- Communication to parents & community was provided through newsletters, school and teacher websites, an electronic message board, and ParentLink calling system.
- The school-wide positive discipline plan (PBIS Program) continues to be expanded.