

## *Extra-Curricular Activities*

While we strive to improve the plight of our students academically, we value the importance of providing social opportunities for our students as well. The following clubs & activities were offered to our students:

- ❖ Girl Scouts
- ❖ Fit Club
- ❖ Gems & Gents
- ❖ Show Choir
- ❖ Step Team
- ❖ Lunch buddies

International Paper, SCE&G, and the Richland County Library continues to be invaluable business partners within our school. Webber Elementary was also the recipient of the Fresh Fruits and Vegetables Grant.

## *Telehealth*

Palmetto Health and Richland One School District have partnered for a telehealth program in the Lower Richland community.

The clinical program will enable students to have face to face visits with a licensed medical provider through the use of video conferencing equipment. The service does not replace existing primary health care. Rather, it extends convenient services to the local community.

## *School Organization & Contact*

### **Council Members:**

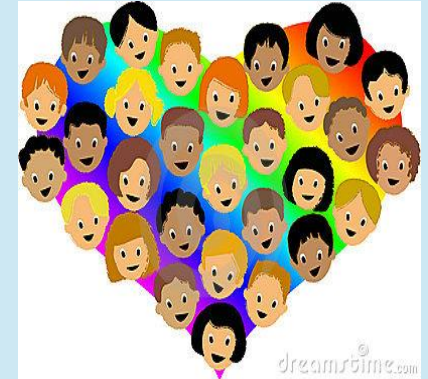
**Mrs. Tiffany Brooks, Principal**  
**Mrs. Tommie Jean Flemming, Chair**  
**Mrs. Candace Bellamy-McKay, CRT**  
**Ms. Tredenja Freeman, Teacher**  
**Mrs. Samantha Cook, Business Partner**  
**Mrs. Joanna Calvy, Parent**  
**Ms. Megg Delk, Parent**  
**Mrs. Debra Smith, Parent**

*The purpose of the Annual Parent Report is to inform parents and stakeholders about the progress, goals and action to improve the academic success of all students attending Webber Elementary School.*



## *Webber Elementary*

*"Inspiring the hearts & minds of every student to reach their fullest potential"*



**2016-2017**

### **SIC ANNUAL REPORT TO PARENTS**

140 Webber School Road  
Eastover, South Carolina 29044  
Office (803) 353-8771  
Fax (803) 353-4032  
School Hours: 7:00a.m-3:00p.m

**We are Richland One, a leader in transforming lives through education, empowering all students to achieve their potential and dreams.**



## School Highlights

During the 2016-2017 school year, Webber Elementary continued to receive Title I funding. Title I funding was used for the following:

- ~Support ELA and Math instruction.
- ~Purchase technology for students.
- ~Provide professional development for Staff.
- ~Offer a summer enrichment program for students in kindergarten through fourth grades.
- ~Provide instructional resources for families.
- ~Hire an additional fifth grade teacher to reduce class size.
- ~Offer Family Night Events.
- ~Provide field experiences for our Students.

It is our goal to continue to utilize funding to improve academic instruction for all students and to provide experiences outside of the school environment.

## School Demographics

Character	2015	2016
Black	83.8	84.3
White	9.5	10.0
Other	6.8	5.7
Special Ed	12.5	14.6
Attendance	96.0	94.7
Poverty Index	94.3	89.0

## Assessment Results

SC Ready replaced ACT Aspire assessment in spring 2016 and includes English language arts and mathematics. Student performance classify into four categories and administered to students in grades 3 through 8.

Performance Level	English 2016	Math 2016
Does Not Meet	34.7	37.5
Approaches	39.6	40.3
Meets	19.4	17.4
Exceeds	6.3	4.9

### *DRA2+*

The Developmental Reading Assessment, is a formative reading assessment which teachers systemically observes, record and evaluates changes in student reading performance.

**~ In 2016 57.1 % of our students performed at or above benchmark**



**Richland One School District does not discriminate on the basis of race, religion, color, handicap, sex, age, lineage or national origin in it programs and activities.**

## Goals & Action Steps

Based on our summative and benchmark assessment results, the leadership team at Webber Elementary identified the following goals to increase student academic achievement on the summative state assessment by 3%:

- Provide professional development for staff members in core content.
- Provide 30 minute periods of tier II interventions daily for each grade level.
- Analyze and set instructional goals based on benchmark assessment results.
- Offer 120 minute uninterrupted Reading blocks for K through 2<sup>nd</sup> grades (3<sup>rd</sup> through 5<sup>th</sup> is throughout the day).
- Full implementation of the Reader's Workshop in all classrooms.



